

Average Daily Net Press Run For The Week Ended January 25, 1969 15,436

VOL. LXXXVIII, NO. 101 (THIRTY-TWO PAGES—TWO SECTIONS) MANCHESTER, CONN., WEDNESDAY, JANUARY 29, 1969 (Classified Advertising on Page 9) PRICE TEN CENTS

# Manchester Evening Herald

Manchester—A City of Village Charm  
MANCHESTER, CONN., WEDNESDAY, JANUARY 29, 1969  
(Classified Advertising on Page 9) PRICE TEN CENTS

## Views Differ On Probate Court Bill

Manchester's three state representatives have taken different views on a proposal by State Rep. James Hanley, Democrat of Waterbury, for sweeping changes in the state's Probate Court System.

## Obituary

Miss Helen M. Piper, 78, of 131 White St., husband of Mrs. Lillian Piper, died today at the home of her daughter, Mrs. Charles and Belle McLooney Piper, and had lived in Manchester for more than 60 years.

## Thant Backs Nixon Views On Mid East

Richard Nixon might might the Middle East peace efforts. He said he agreed with the President's view that this was an internal affair, but added he felt it was correct for him to say that such an approach might harm Jarring's mission.

## U.S., Saigon Forces Hit Foe at 3 Points

Against some of the thousands of U.S. troops that are out every day on sweep operations, the Viet Cong have hit three points in the area of the DMZ.

## Credit Union Picks Slate, Votes Refund

At its annual meeting held last night at White's Steak House, Manchester, Treasurer Federal Credit Union members re-elected Mrs. Mary Hutchinson and William Taney, and elected Calvin Fish to the board of directors.

## New Rules Readied On Group Dwellings

The Planning and Zoning Commission at its executive sessions and public hearings last night prepared regulations and zoning ordinance for presentation at the March 3 public hearing.

## Nixon Meets With Council On N-Treaty

WASHINGTON (AP)—President Nixon and the National Security Council met today to discuss timing for Senate ratification of the nuclear nonproliferation treaty.

## New Iraqi Spy Trial Reported Under Way

A new Iraqi spy trial was reported under way today. Demonstrators besieged Britain's Embassy in Baghdad today in protest against British reaction to the arrest of 14 men accused of spying for Israel.

## Train Service Cut Stopped by PUC

HARTFORD, Conn. (AP)—The Penn Central was ordered by the state Public Utilities Commission (PUC) to stop cutting back train service between Boston and New York City next Sunday.

## Manchester Grand List At Record \$231 Million

Manchester's grand list for 1968, based on Oct. 1, 1968 assessments, has reached the all-time high of \$231,052,666—up \$8,759,647, or approximately 4 per cent from last year.

## 4 Per Cent Increase in Assessments

Manchester's grand taxable Grand List, based on Oct. 1, 1968 assessments, has reached the all-time high of \$231,052,666—up \$8,759,647, or approximately 4 per cent from last year.

## Living Costs Climb Slows In December

WASHINGTON (AP)—The rise in living costs slowed in December with an increase of two-tenths of one per cent, but 1968 still wound up with the highest rate in 10 years, totaling 4.7 per cent.

## South Viets Set Truce During Tet

SAIGON (AP)—The South Vietnamese government today set a truce during the Tet holiday, ending a 10-day period of fighting.

## Two Planes Winging For Hijack Victims

MIAMI (AP)—Two Electra don't want to have to hurt for jets flew from Miami to Cuba today to bring back the 129 of 135 passengers diverted to the Communist island.

## Public Records

Warrantee Deeds National Dairy Products Corp. to Earle J. Wilson and Lloyd E. Wilson, two parcels on east side of Stamford St., conveyance tax \$40.70.

## Showers Given For Miss Tuttle

Miss Judith Ann Tuttle of 131 Mather St. was recently killed at three bridal showers.

## Boh Hope Suffers Eye Hemorrhage

LOS ANGELES, Calif. (AP)—Comedian Bob Hope will undergo treatment today for an eye hemorrhage.

## Another Jet Is Hijacked To Havana

—That's the way TV thugs are handled. Day after day, proposed cures for the world's ills are peddled.

## Washout Account Sought For Project Head Start

The Board of Education voted last night to request the Board of Directors to establish a "washout account for Project Head Start."

## Young Escapee Turns Self In

After a phone call to his East Hartford girl friend, Frank Hartford Jr., 17, of East Hartford, returned to the Manchester Police Headquarters last night about 9:30.

## Lightning Strikes Airliner Over California

Damage to a United Air Lines plane from a lightning strike is examined at Los Angeles International Airport yesterday, by Clarence Rice, assistant chief of maintenance for the line. The lightning, part of a storm sweeping across southern California, hit the craft just before it landed.

## Mark Shaw Dies, Kennedy Family Photographer

NEW YORK (AP)—Mark Shaw, who shot the White House photographer for President Kennedy, died of a heart attack Sunday night in his home in Los Angeles.

## To Latin America Rocketeer Asked To Head Nixon Fact-Finding Mission

WASHINGTON (AP)—New York Gov. Nelson A. Rockefeller, passed over for a place in the Nixon Cabinet, has been asked to head a fact-finding mission to Latin America.

## Shawmet Kennedy during Visit to Latin America

Shaw met Kennedy during his 1960 Presidential campaign when he was a member of the White House staff.

## Public Records

Warrantee Deeds National Dairy Products Corp. to Earle J. Wilson and Lloyd E. Wilson, two parcels on east side of Stamford St., conveyance tax \$40.70.

## Public Records

Warrantee Deeds National Dairy Products Corp. to Earle J. Wilson and Lloyd E. Wilson, two parcels on east side of Stamford St., conveyance tax \$40.70.

## Public Records

Warrantee Deeds National Dairy Products Corp. to Earle J. Wilson and Lloyd E. Wilson, two parcels on east side of Stamford St., conveyance tax \$40.70.

## Public Records

Warrantee Deeds National Dairy Products Corp. to Earle J. Wilson and Lloyd E. Wilson, two parcels on east side of Stamford St., conveyance tax \$40.70.

## Public Records

Warrantee Deeds National Dairy Products Corp. to Earle J. Wilson and Lloyd E. Wilson, two parcels on east side of Stamford St., conveyance tax \$40.70.

## Public Records

Warrantee Deeds National Dairy Products Corp. to Earle J. Wilson and Lloyd E. Wilson, two parcels on east side of Stamford St., conveyance tax \$40.70.

## Public Records

Warrantee Deeds National Dairy Products Corp. to Earle J. Wilson and Lloyd E. Wilson, two parcels on east side of Stamford St., conveyance tax \$40.70.

## Public Records

Warrantee Deeds National Dairy Products Corp. to Earle J. Wilson and Lloyd E. Wilson, two parcels on east side of Stamford St., conveyance tax \$40.70.

## Public Records

Warrantee Deeds National Dairy Products Corp. to Earle J. Wilson and Lloyd E. Wilson, two parcels on east side of Stamford St., conveyance tax \$40.70.

## Public Records

Warrantee Deeds National Dairy Products Corp. to Earle J. Wilson and Lloyd E. Wilson, two parcels on east side of Stamford St., conveyance tax \$40.70.

## Public Records

Warrantee Deeds National Dairy Products Corp. to Earle J. Wilson and Lloyd E. Wilson, two parcels on east side of Stamford St., conveyance tax \$40.70.

## Public Records

Warrantee Deeds National Dairy Products Corp. to Earle J. Wilson and Lloyd E. Wilson, two parcels on east side of Stamford St., conveyance tax \$40.70.

## Public Records

Warrantee Deeds National Dairy Products Corp. to Earle J. Wilson and Lloyd E. Wilson, two parcels on east side of Stamford St., conveyance tax \$40.70.

## Public Records

Warrantee Deeds National Dairy Products Corp. to Earle J. Wilson and Lloyd E. Wilson, two parcels on east side of Stamford St., conveyance tax \$40.70.

## Public Records

Warrantee Deeds National Dairy Products Corp. to Earle J. Wilson and Lloyd E. Wilson, two parcels on east side of Stamford St., conveyance tax \$40.70.

## Public Records

Warrantee Deeds National Dairy Products Corp. to Earle J. Wilson and Lloyd E. Wilson, two parcels on east side of Stamford St., conveyance tax \$40.70.

## Public Records

Warrantee Deeds National Dairy Products Corp. to Earle J. Wilson and Lloyd E. Wilson, two parcels on east side of Stamford St., conveyance tax \$40.70.

## Public Records

Warrantee Deeds National Dairy Products Corp. to Earle J. Wilson and Lloyd E. Wilson, two parcels on east side of Stamford St., conveyance tax \$40.70.

## Public Records

Warrantee Deeds National Dairy Products Corp. to Earle J. Wilson and Lloyd E. Wilson, two parcels on east side of Stamford St., conveyance tax \$40.70.

## Public Records

Warrantee Deeds National Dairy Products Corp. to Earle J. Wilson and Lloyd E. Wilson, two parcels on east side of Stamford St., conveyance tax \$40.70.

## Public Records

Warrantee Deeds National Dairy Products Corp. to Earle J. Wilson and Lloyd E. Wilson, two parcels on east side of Stamford St., conveyance tax \$40.70.

## Public Records

Warrantee Deeds National Dairy Products Corp. to Earle J. Wilson and Lloyd E. Wilson, two parcels on east side of Stamford St., conveyance tax \$40.70.

## Public Records

Warrantee Deeds National Dairy Products Corp. to Earle J. Wilson and Lloyd E. Wilson, two parcels on east side of Stamford St., conveyance tax \$40.70.

## Public Records

Warrantee Deeds National Dairy Products Corp. to Earle J. Wilson and Lloyd E. Wilson, two parcels on east side of Stamford St., conveyance tax \$40.70.

## Public Records

Warrantee Deeds National Dairy Products Corp. to Earle J. Wilson and Lloyd E. Wilson, two parcels on east side of Stamford St., conveyance tax \$40.70.

## Public Records

Warrantee Deeds National Dairy Products Corp. to Earle J. Wilson and Lloyd E. Wilson, two parcels on east side of Stamford St., conveyance tax \$40.70.

## Public Records

Warrantee Deeds National Dairy Products Corp. to Earle J. Wilson and Lloyd E. Wilson, two parcels on east side of Stamford St., conveyance tax \$40.70.

## Public Records

Warrantee Deeds National Dairy Products Corp. to Earle J. Wilson and Lloyd E. Wilson, two parcels on east side of Stamford St., conveyance tax \$40.70.

## Public Records

Warrantee Deeds National Dairy Products Corp. to Earle J. Wilson and Lloyd E. Wilson, two parcels on east side of Stamford St., conveyance tax \$40.70.

## Public Records

Warrantee Deeds National Dairy Products Corp. to Earle J. Wilson and Lloyd E. Wilson, two parcels on east side of Stamford St., conveyance tax \$40.70.

## Public Records

Warrantee Deeds National Dairy Products Corp. to Earle J. Wilson and Lloyd E. Wilson, two parcels on east side of Stamford St., conveyance tax \$40.70.

## Public Records

Warrantee Deeds National Dairy Products Corp. to Earle J. Wilson and Lloyd E. Wilson, two parcels on east side of Stamford St., conveyance tax \$40.70.

## Public Records

Warrantee Deeds National Dairy Products Corp. to Earle J. Wilson and Lloyd E. Wilson, two parcels on east side of Stamford St., conveyance tax \$40.70.

## Public Records

Warrantee Deeds National Dairy Products Corp. to Earle J. Wilson and Lloyd E. Wilson, two parcels on east side of Stamford St., conveyance tax \$40.70.

## Public Records

Warrantee Deeds National Dairy Products Corp. to Earle J. Wilson and Lloyd E. Wilson, two parcels on east side of Stamford St., conveyance tax \$40.70.

## Public Records

Warrantee Deeds National Dairy Products Corp. to Earle J. Wilson and Lloyd E. Wilson, two parcels on east side of Stamford St., conveyance tax \$40.70.

## Public Records

Warrantee Deeds National Dairy Products Corp. to Earle J. Wilson and Lloyd E. Wilson, two parcels on east side of Stamford St., conveyance tax \$40.70.

## Public Records

Warrantee Deeds National Dairy Products Corp. to Earle J. Wilson and Lloyd E. Wilson, two parcels on east side of Stamford St., conveyance tax \$40.70.

## Public Records

Warrantee Deeds National Dairy Products Corp. to Earle J. Wilson and Lloyd E. Wilson, two parcels on east side of Stamford St., conveyance tax \$40.70.

## Public Records

Warrantee Deeds National Dairy Products Corp. to Earle J. Wilson and Lloyd E. Wilson, two parcels on east side of Stamford St., conveyance tax \$40.70.

## Public Records

Warrantee Deeds National Dairy Products Corp. to Earle J. Wilson and Lloyd E. Wilson, two parcels on east side of Stamford St., conveyance tax \$40.70.

## Public Records

Warrantee Deeds National Dairy Products Corp. to Earle J. Wilson and Lloyd E. Wilson, two parcels on east side of Stamford St., conveyance tax \$40.70.

## Public Records

Warrantee Deeds National Dairy Products Corp. to Earle J. Wilson and Lloyd E. Wilson, two parcels on east side of Stamford St., conveyance tax \$40.70.

## Public Records

Warrantee Deeds National Dairy Products Corp. to Earle J. Wilson and Lloyd E. Wilson, two parcels on east side of Stamford St., conveyance tax \$40.70.

## Public Records

Warrantee Deeds National Dairy Products Corp. to Earle J. Wilson and Lloyd E. Wilson, two parcels on east side of Stamford St., conveyance tax \$40.70.

## Public Records

Warrantee Deeds National Dairy Products Corp. to Earle J. Wilson and Lloyd E. Wilson, two parcels on east side of Stamford St., conveyance tax \$40.70.

## Public Records

Warrantee Deeds National Dairy Products Corp. to Earle J. Wilson and Lloyd E. Wilson, two parcels on east side of Stamford St., conveyance tax \$40.70.

## Public Records

Warrantee Deeds National Dairy Products Corp. to Earle J. Wilson and Lloyd E. Wilson, two parcels on east side of Stamford St., conveyance tax \$40.70.

## Public Records

Warrantee Deeds National Dairy Products Corp. to Earle J. Wilson and Lloyd E. Wilson, two parcels on east side of Stamford St., conveyance tax \$40.70.

## Public Records

Warrantee Deeds National Dairy Products Corp. to Earle J. Wilson and Lloyd E. Wilson, two parcels on east side of Stamford St., conveyance tax \$40.70.

## Public Records

Warrantee Deeds National Dairy Products Corp. to Earle J. Wilson and Lloyd E. Wilson, two parcels on east side of Stamford St., conveyance tax \$40.70.

## Public Records

Warrantee Deeds National Dairy Products Corp. to Earle J. Wilson and Lloyd E. Wilson, two parcels on east side of Stamford St., conveyance tax \$40.70.

## Public Records

Warrantee Deeds National Dairy Products Corp. to Earle J. Wilson and Lloyd E. Wilson, two parcels on east side of Stamford St., conveyance tax \$40.70.

## Public Records

Warrantee Deeds National Dairy Products Corp. to Earle J. Wilson and Lloyd E. Wilson, two parcels on east side of Stamford St., conveyance tax \$40.70.

## Public Records

Warrantee Deeds National Dairy Products Corp. to Earle J. Wilson and Lloyd E. Wilson, two parcels on east side of Stamford St., conveyance tax \$40.70.

## Public Records

Warrantee Deeds National Dairy Products Corp. to Earle J. Wilson and Lloyd E. Wilson, two parcels on east side of Stamford St., conveyance tax \$40.70.

## Public Records

Warrantee Deeds National Dairy Products Corp. to Earle J. Wilson and Lloyd E. Wilson, two parcels on east side of Stamford St., conveyance tax \$40.70.

## Public Records

Warrantee Deeds National Dairy Products Corp. to Earle J. Wilson and Lloyd E. Wilson, two parcels on east side of Stamford St., conveyance tax \$40.70.

## Public Records

Warrantee Deeds National Dairy Products Corp. to Earle J. Wilson and Lloyd E. Wilson, two parcels on east side of Stamford St., conveyance tax \$40.70.

## Public Records

Warrantee Deeds National Dairy Products Corp. to Earle J. Wilson and Lloyd E. Wilson, two parcels on east side of Stamford St., conveyance tax \$40.70.

## Public Records

Warrantee Deeds National Dairy Products Corp. to Earle J. Wilson and Lloyd E. Wilson, two parcels on east side of Stamford St., conveyance tax \$40.70.

## Public Records

Warrantee Deeds National Dairy Products Corp. to Earle J. Wilson and Lloyd E. Wilson, two parcels on east side of Stamford St., conveyance tax \$40.70.

## Public Records

Warrantee Deeds National Dairy Products Corp. to Earle J. Wilson and Lloyd E. Wilson, two parcels on east side of Stamford St., conveyance tax \$40.70.

## Public Records

Warrantee Deeds National Dairy Products Corp. to Earle J. Wilson and Lloyd E. Wilson, two parcels on east side of Stamford St., conveyance tax \$40.70.

## Public Records

Warrantee Deeds National Dairy Products Corp. to Earle J. Wilson and Lloyd E. Wilson, two parcels on east side of Stamford St., conveyance tax \$40.70.

## Public Records

Warrantee Deeds National Dairy Products Corp. to Earle J. Wilson and Lloyd E. Wilson, two parcels on east side of Stamford St., conveyance tax \$40.70.

## Public Records

Warrantee Deeds National Dairy Products Corp. to Earle J. Wilson and Lloyd E. Wilson, two parcels on east side of Stamford St., conveyance tax \$40.70.

## Public Records

Warrantee Deeds National Dairy Products Corp. to Earle J. Wilson and Lloyd E. Wilson, two parcels on east side of Stamford St., conveyance tax \$40.70.

## Public Records

Warrantee Deeds National Dairy Products Corp. to Earle J. Wilson and Lloyd E. Wilson, two parcels on east side of Stamford St., conveyance tax \$40.70.

## Public Records

Warrantee Deeds National Dairy Products Corp. to Earle J. Wilson and Lloyd E. Wilson, two parcels on east side of Stamford St., conveyance tax \$40.70.

## Public Records

Warrantee Deeds National Dairy Products Corp. to Earle J. Wilson and Lloyd E. Wilson, two parcels on east side of Stamford St., conveyance tax \$40.70.

## Public Records

Warrantee Deeds National Dairy Products Corp. to Earle J. Wilson and Lloyd E. Wilson, two parcels on east side of Stamford St., conveyance tax \$40.70.

## Public Records

Warrantee Deeds National Dairy Products Corp. to Earle J. Wilson and Lloyd E. Wilson, two parcels on east side of Stamford St., conveyance tax \$40.70.

## Public Records

Warrantee Deeds National Dairy Products Corp. to Earle J. Wilson and Lloyd E. Wilson, two parcels on east side of Stamford St., conveyance tax \$40.70.

## Public Records

Warrantee Deeds National Dairy Products Corp. to Earle J. Wilson and Lloyd E. Wilson, two parcels on east side of Stamford St., conveyance tax \$40.70.

## Public Records

Warrantee Deeds National Dairy Products Corp. to Earle J. Wilson and Lloyd E. Wilson, two parcels on east side of Stamford St., conveyance tax \$40.70.

## Public Records

Warrantee Deeds National Dairy Products Corp. to Earle J. Wilson and Lloyd E. Wilson, two parcels on east side of Stamford St., conveyance tax \$40.70.

## Public Records

Warrantee Deeds National Dairy Products Corp. to Earle J. Wilson and Lloyd E. Wilson, two parcels on east side of Stamford St., conveyance tax \$40.70.

## Public Records

Warrantee Deeds National Dairy Products Corp. to Earle J. Wilson and Lloyd E. Wilson, two parcels on east side of Stamford St., conveyance tax \$40.70.

## Public Records

Warrantee Deeds National Dairy Products Corp. to Earle J. Wilson and Lloyd E. Wilson, two parcels on east side of Stamford St., conveyance tax \$40.70.

## Public Records

Warrantee Deeds National Dairy Products Corp. to Ear

BLACKY THE ANGUS SEZ: We now carry strictly fresh fish. Come on down and try some.

SPECIALS THURSDAY, FRIDAY AND SATURDAY

LEAN SHOULDER CLOD ROAST 85c

OUR OWN FRESH MADE ITALIAN SAUSAGE 69c

CUDAHY HICKORY SMOKED WHOLE HAM 59c

JUICY, FLAVORFUL DELMONICO STEAKS \$1.49

GROUND CHUCK 65c GROUND ROUND 79c

FILL YOUR FREEZER - ALL MEATS CUT, WRAPPED AND QUICK FROZEN TO YOUR SPECIFICATIONS AT NO EXTRA CHARGE.

HINDQUARTERS SIDES 69c 59c

WESTERN BEEF MART

New Orleans Dock Workers Key to Tie-up

NEW ORLEANS (AP) - Striking dock workers in New Orleans hold one of the major keys to a breakthrough which could end the 40-day walkout...

Chittenden said "any help we can get" would be accepted. I.A. President Thomas V. Gleason said private talks with...

That's the tentative agreement reached on a master contract in New York and Chittenden and Henry want it for their members.

The Gleason summons for executive council members to rush here came as word circulated that the White House may reenter the costly labor dispute next week if there is no settlement in the strike that has more than 420 idled ships from Maine to Texas.

In Washington, however, a White House spokesman said President Nixon still expected the strike to be resolved through the normal bargaining process.

A few firms in New Haven and Bridgeport, Conn., are feeling the effect of the dock strike. They say supplies on hand have dwindled and they could be in trouble if the strike drags on.

About 80 dock workers in the two Connecticut port cities are affected. However, the impact on business has been light because of the seasonal lull in shipping to Connecticut.

Odd Claims Show Anything Can Happen... To Anyone, Almost...

By HAL BOYLE In Arizona a man collected after he was dive-bombed by a seagull and approved under the Motion Picture Code of Self-Regulation.

Insurance claims adjusters, too, in time become familiar with the quirk of chance and the vagaries of human behavior.

One of these, R.J. Hartum, claims vice president of State Farm Mutual and a man with a few eyes for the ridiculous and the unusual, collects as a hobby some of the odd cases his firm has been called upon to settle.

Here is one of Hartum's favorites: Here in one of Bartrum's favorites: Being a kidney bean, a lady diner guest bit into some thing hard. It exploded. The woman found the hard object was a cherry bomb yungling in the family had lost earlier while playing catch in the kitchen.

The lady, fortunately, suffered no serious injury. The plate-but later had to put up with a thorough check-up and the possibility of shooting off her mouth.

Alaine - Alaine's complete guide to thoroughbred racing. Anderson - How to hunt White-tail deer.

Armour - My life with the woman Baldwin. Carson - Colonial Virginia cookery.

Donovan - Bridges in the sky. Dutton - The M-16. A compact history, 1846-1948. Durnbaugh - "The believers".

Sheinwold on Bridge

SHOW STRONG NOTRUMP BY ALFRED SHEINWOLD When you use an opening bid of showing a very powerful hand you can indicate a strong notrump hand by your rebid.

South opens with two clubs and then bids two notrump. North has had one point less than his actual hand. North would then pass.

With a full 20 points, South opens with two clubs and then bids two notrump. North has had one point less than his actual hand. North would then pass.

South must overstate dummy's jack of spades with the king, beginning early with a cautious line of play. Dummy's spade entry must be saved until South knows what to do with it.

Admitted Monday: William Roberts, Tolland; Diane Grant, Wallingford; Perry Wilson, Ellington; Mona McAlmont, Nye St.; Edwin Carlson, Tolland; Christopher Sherman, Cromwell; Josephine Rick, West St.; Monica Chranowicz, Thompson St.; Juliana Wastleky, Ellington; Cheryl Ann Roberts, Hartford Dr.; Cynthia Jones, Ellington.

Discharged Monday: Wilfred Blair, Tolland; Richard Oude, Tolland.

Just one weakness. THE SERGEANT ROD STEIGER STUNS

Bolton Lake Hotel Thurs. Night Special-Ladies! All Legal Beverages 1/2 PRICE EVERY THURSDAY NIGHT

Tolland Tour Leads to Lighting Busy, Hazardous Streets

The town will begin installing mercury vapor lights at busy and hazardous intersections, according to First Selectman Ernest Vile.

Vile toured the town this week with Selectman Albert Marguson and Ted Pavesio of Connecticut Light and Power Co. to determine the areas most in need of the lights.

Selected areas include the corner of Anthony Rd. and Rt. 166 on Rt. 166 at Goose Lane and Leonard's Corners.

The two most hazardous areas are the corner of Anthony Rd. and Goose Lane and Leonard's Corners.

Advertisement - Wanted: Newbury or New Britain in the vicinity of New Rd. White Birch Dr. and Tolland Hills in Tolland. Route Available in Ellington. Call Herald Circulation Dept. Mr. Corvora or Mr. Humphrey, 678-3136.

Manchester Evening Herald Tolland correspondent, Betty Quatro, tel. 972-3585.

MISSISSIPPI STUDIED QUINCY, Ill. (AP) - Microscopic scrutiny of the "Mighty Mississippi" is being conducted by biology students of Quincy College.

The department of biological science has acquired a floating laboratory known as the "G.C. Researcher." Samples of the river's water are taken and analyzed.

Picnic' Opens LTM's Season

"Picnic" William Inge's Pulitzer Prize winning play about a small town picnic that became dramatic when two people didn't go, will open the 1969 season of the Little Theatre of Manchester.

Completed the list of new faces in Dennis Turner, who will play the rich young author, a professional playwright, with Richter and Tom Fogarty competing the cast.

"Picnic" will be presented Feb. 27 and 28 and March 1 at Bailey Auditorium, Manchester High School.

LTM's ninth annual patron subscription drive is now in progress and will continue through February. Anyone interested in joining LTM as a patron subscriber may do so by contacting the patron drive chairman, Mrs. Ann Miller, 81 Mill St.

Engaged The engagement of Miss Jeanne Elizabeth Bruno of Ray Brook, N.Y., to George S. Foster III of Vermont has been announced by her parents, Mr. and Mrs. Melvyn Bruno of Ray Brook.

Her fiancé is the son of Mr. and Mrs. George S. Foster Jr. of 316 Lake St. Miss Bruno, a 1964 graduate of Plur X High School, attended the University of Vermont.

Mr. Foster is a 1966 graduate of Rockville High School and a 1968 graduate of Paul Smith's College where he majored in forestry. He is a surveyor's assistant with the New York Conservation Department in Ray Brook.

A summer wedding is planned.

Manchester Evening Herald, Manchester, Conn., Wednesday, January 28, 1969. Page Three.

Keith's Clearance In Our Floor Covering Dept. of Famous Broadloom Rugs and Carpeting! Claremont Braided Rugs 95% Reprocessed Wool All Sizes Approximate Avocado, Brown, Gold, Green (Not all sizes in all colors)

Wall-to-Wall For Years of Beauty! We have 28 sq. yds. 100% nylon antique gold tweed. Enough to cover the complete floor of a 12'0" x 21'0" room. \$195.00 Including labor and lining!

Roman Gold 3-9x12, 501 Nylon Rugs Reg. \$89.95, NOW! \$69.95. 1-9x12 Mocha Cont. Filament Nylon Rug Reg. \$99.50, NOW! \$69.95. STAIR CARPETING Candy Stripe Pattern \$3.95 Per Yard. 27 inches wide and expressly manufactured to take the hard wear present on stairs and hallways.

OVERSIZE RUGS Made from Ends of Rolls Now At January Clearance Sale Prices! 1-315/764DJ CONTINUOUS FILAMENT NYLON RUG. Pumpkin color, 12' x 12', Reg. \$99.50. SALE! \$79.00. 3-315/882DJ CONTINUOUS FILAMENT NYLON RUG. Color: Shell beige, 12' x 15', Reg. \$129.95. SALE! \$109.95.

Keith's Furniture 115 MAIN ST. MANCHESTER. Opposite the Bennett Junior High School on Lower (South-East) Main Street. For Friendly Service Phone 643-4159.

Manchester Savings & Loan Association. on a little or a lot. Whether you have just a few dollars you want to put to work... or a fortune... Manchester Savings & Loan Association welcomes your account. And never before have savings earned so much money for you... a great big 5 per cent yearly. Dividends start the very day you make your deposit and are payable and compounded quarterly. (You earn dividends on dividends that are left with your savings.) Here's the easy way to make money. Your money is always available any time you might need it. No advance notice required. No waiting.

AAMCO TRANSMISSIONS OF MANCHESTER BUDGET TERMS NATIONWIDE GUARANTEED SERVICE Loner Cars Free Towing Tel. 643-2467 Vernon Town Lane Rte. 8, Talcottville, Conn.

COVERS LIKE CRAZY

Dutch Boy Nalplex is the latex flat wall paint with the built-in second coat. So high in hiding, smooth in leveling, one coat looks like two. Made for rollers, Nalplex doesn't spatter when you put it on, spreads smoothly, covers like crazy. When you've finished painting, clean up you and your tools with soap and water. Hundreds of colors to choose from. too.

E. A. JOHNSON PAINT CO. 723 MAIN STREET MANCHESTER, CONN.

Manchester Evening Herald Published Daily Except Sundays and Holidays at 13 Broad Street, Manchester, Conn. Telephone 643-2711. Second Class Postage Paid at Manchester, Conn. SUBSCRIPTION RATES: One Year \$10.00 In Advance. Three Months \$3.00. Six Months \$5.00. Single Copies 10c.

DAVID NIVEN 'THE IMPOSSIBLE YEARS' "Horton and Martin at the Movies" "THE SHEPHERD AND THE ELVES" PLUS YOUR FAVORITE CARTOONS 4 HOURS OF ENJOYMENT FOR CHILDREN OF ALL AGES

Rain, Hail, Snow Lash Out Again At West Coast

LOS ANGELES (AP) — Rain, hail and snow lashed out again Tuesday at California, particularly the south half of the state — already reeling from its most devastating weather disaster in 21 years.



Lightning hit four children in the air, but no one was injured. Two more bodies were found in the Los Angeles area, raising to 10 the number of storm-related deaths since Jan. 18. One person was found dead under a collapsed retaining wall. The other body was in a house crushed by flood waters.

Warner Asks For \$4.6 Million Budget

Supt. of Schools Charles L. Warner last night presented the Board of Education with a \$4.6 million proposed budget. His gross grand total before reduction by state aid comes to \$4,654,253. This is a gross increase of \$1,038,790 over last year's figure of \$3,615,463.

THINK SMALL \$1695.50 1969 Volkswagen Sedan. Equipped with leatherette interior, windshield wiper, 3-speed electric wipers, heater, defogger, lights, front and rear seat belts, leatherette headrests, a 171 g wheel lock and rear window defroster.

SALE PRICED! Rubbermaid WASTEBASKETS. REG. 98¢ NOW 77¢. REG. 1.98 NOW \$1.57. REG. 2.98 NOW \$2.37.

Tax FAIRWAY. The Once A Year Sale! (We have all the popular colors).

South Windsor World Desserts Top Off Dinner. An International dinner will be held tomorrow from 8:30 to 7:30 p.m. at the South Windsor High School.

Junior Miss Pageant Semi-Finalist. Miss Mona E. Scalley, 19, Estelle Dr., Vernon, daughter of Dr. and Mrs. Francis J. Scalley Jr., has been chosen as one of the 16 semi-finalists in the Connecticut Junior Miss Pageant.

AIRPORT LANDS STARS. HOLLYWOOD (AP) — Burt Reynolds and Dean Martin in various stages, \$429,800 or 41 per cent for salary increases in present staff, \$208,254 or 36 per cent for increases in the present program, \$190,200 or 19 per cent for new staff, a 6

South Windsor Dems Start SW Caucus

At their first meeting 10 a.m. Tuesday, the South Windsor Chapter of the Caucus of Connecticut Democrats was formed and officers were elected.

Thomas J. Gilmartin of 73 Holly Lane was elected chairman and Karen Cowperthwaite of 108 Ellington Rd. was elected secretary and treasurer. Gilmartin was also chosen to represent the local chapter as a delegate to the first state convention of the Caucus to be held February 20 in either Hartford or New Haven.

Vernon Sykes Closed For Repairs

The students at Sykes School are having an unexpected vacation while all of the ceilings in the building are being reinforced.

GOOD YEAR SERVICE STORES. BATTERY SALE. This week only! Offer ends Saturday Night BUY NOW - SAVE. "ALL-WEATHER" SPECIAL BATTERY 12-volt Reg. \$19.00 \$15.95. "MOTR-SPIN" BATTERY 6-volt Reg. \$9.88 \$8.88. EXPERT LUBE JOB FREE \$2.50. OIL FILTER 50% OFF. BUDGET TERMS - UP TO 36 MONTHS TO PAY! GOOD YEAR SERVICE STORE. KELLY ROAD, VERNON SHOPPING CENTER. PHONES 675-4272, 644-0101. STORE HOURS Mon. and Tues. 8-6 - Wed., Thurs., Fri. 8-9 - Sat. 8-3

Burton's SMILING SERVICE SHOE SALON • DOWNTOWN MANCHESTER. SHOE SALE. Burton's is having a really big shoe sale, because we just have too many pairs of shoes! You'll find such famous names as Town & Country, Red Cross, Cobbies, Socialites, Bandolinos, Viva Americana, Comtempo, First Editions, Sun-ees of California, Caresse.

Burton's SMILING SERVICE. Update your engagement diamond in a new setting. Diamonds never go out of fashion, but settings do. So don't let an unattractively old setting detract from the beauty of your engagement diamond. See our beautifully new and graceful settings. A wide selection from as little as \$200. EASY PAYMENTS AVAILABLE. JEWELERS-SILVERSMITHS. 508 Main St., Manchester.

Press, Politicians Challenge Trudeau's Role in London

By MAX HARRISON. Ottawa (AP) — How long is over for bachelor Pierre Elliott Trudeau, Canada's prime minister is under fire.

Under his prime ministerial role, Trudeau doesn't seem much concerned. His approach to take a long, fresh look at all existing policies — including foreign policy — before acting. The process includes reviews by task forces, dialogue with the public, debates in the Cabinet and in parliamentary committees, and finally decisions.

Under his prime ministerial role, Trudeau doesn't seem much concerned. His approach to take a long, fresh look at all existing policies — including foreign policy — before acting. The process includes reviews by task forces, dialogue with the public, debates in the Cabinet and in parliamentary committees, and finally decisions.

Under his prime ministerial role, Trudeau doesn't seem much concerned. His approach to take a long, fresh look at all existing policies — including foreign policy — before acting. The process includes reviews by task forces, dialogue with the public, debates in the Cabinet and in parliamentary committees, and finally decisions.

Under his prime ministerial role, Trudeau doesn't seem much concerned. His approach to take a long, fresh look at all existing policies — including foreign policy — before acting. The process includes reviews by task forces, dialogue with the public, debates in the Cabinet and in parliamentary committees, and finally decisions.

Under his prime ministerial role, Trudeau doesn't seem much concerned. His approach to take a long, fresh look at all existing policies — including foreign policy — before acting. The process includes reviews by task forces, dialogue with the public, debates in the Cabinet and in parliamentary committees, and finally decisions.

Under his prime ministerial role, Trudeau doesn't seem much concerned. His approach to take a long, fresh look at all existing policies — including foreign policy — before acting. The process includes reviews by task forces, dialogue with the public, debates in the Cabinet and in parliamentary committees, and finally decisions.

COMPARE PRICE COMPARE SERVICE and you'll buy CHEAPER. Color TV FROM BARLOW'S TELEVISION. 1950 TOLLAND TPK. Manchester 2 642-9000

Following Negro Lead Now Mexican-Americans Want To Improve Image

By BOB THOMAS. Associated Press Writer. LOS ANGELES (AP) — Now it's the Mexican-Americans who want to improve their image.

Following the lead of Negro groups, two organizations claiming to represent feeling in the Mexican-American community have petitioned the film and television industry for a better portrayal of their people.

Following the lead of Negro groups, two organizations claiming to represent feeling in the Mexican-American community have petitioned the film and television industry for a better portrayal of their people.

Following the lead of Negro groups, two organizations claiming to represent feeling in the Mexican-American community have petitioned the film and television industry for a better portrayal of their people.

Following the lead of Negro groups, two organizations claiming to represent feeling in the Mexican-American community have petitioned the film and television industry for a better portrayal of their people.

Following the lead of Negro groups, two organizations claiming to represent feeling in the Mexican-American community have petitioned the film and television industry for a better portrayal of their people.

Following the lead of Negro groups, two organizations claiming to represent feeling in the Mexican-American community have petitioned the film and television industry for a better portrayal of their people.

WANTED. AUTOMOBILE SALESMAN. Fringe benefits, ideal working conditions, applying in person to: ED DOUCETTE. PAUL DODGE PONTIAC. 375 MAIN STREET, MANCHESTER.

WANTED. AUTOMOBILE SALESMAN. Fringe benefits, ideal working conditions, applying in person to: ED DOUCETTE. PAUL DODGE PONTIAC. 375 MAIN STREET, MANCHESTER.

TAX RETURN PREPARATION. Kenneth P. Easton Jr. TAX PRACTITIONER. "Complete and Confidential Income Tax Servicing." "THE MANCHESTER TAX MAN". 88 Bridge St., Manchester, Conn. — Phone 648-2981.

Burton's SMILING SERVICE. Clearance of Famous Garland Sportswear. Sweaters 7.99, Skirts 7.90. Choose from a wide selection of wonderful sweaters and skirts in different styles and patterns by New England's famous maker of fine quality sportswear.

Burton's SMILING SERVICE. Update your engagement diamond in a new setting. Diamonds never go out of fashion, but settings do. So don't let an unattractively old setting detract from the beauty of your engagement diamond. See our beautifully new and graceful settings. A wide selection from as little as \$200. EASY PAYMENTS AVAILABLE. JEWELERS-SILVERSMITHS. 508 Main St., Manchester.

Burton's SMILING SERVICE. Lucky You!... Lucky Us! Just Arrived! AN EXCEPTIONAL SALE OF CAR COATS FROM FAMOUS DAVIS OF BOSTON. regular 42.00. Scoop up tremendous savings of 1/3 OFF on this fabulous assortment of car coats in the newest, smartest styles and fabrics... and at a price you can't beat! All these wonderful coats in sizes 6 to 18.

Generator Fails, Causes Blackout in Florida Areas

FORT LAUDERDALE, Fla. (AP) — A million-dollar generator failure Tuesday sent a blackout sweeping Florida leaving some Floridians snarled at lighted intersections and others dining by candlelight.



Sinatra's Father Buried

Frank Sinatra aids his mother as they leave the Madonna Church in Fort Lee yesterday after funeral services for the singer's father Anthony M. Sinatra. At right is Frank Sinatra Jr., also a singer. (AP Photofax)

Ann Everhart, 12 Trotter St.; Lawrence Jarvis, 38 Canterbury St.; David Heinz, Columbia; Thomas Ryan, Willimantic; Also, Robert Katzmann, East Hartford; Bernard Morse, de Gunglindone, Hebron Rd., Thompsonville; Jon Morhardt, 25 Trumbull St.; James McCricken, 43 Jensen St.; Raymond Stafford Springs; Raymond

Nigerian Troops Said Launching Major Offensive

LAGOS, Nigeria (AP) — Nigerian troops trying to smother a strategic supply route between Onitsha and Enugu have launched a "major offensive" radio Biafra said today. But the Nigerian command would not confirm the report.

The federal army chief of staff, Brig. Hassan Usman Katsina, conferred in Benin City, 200 miles east of Lagos, with the commanders of three federal divisions encircling secessionist Biafran territory in eastern Nigeria. Radio Biafra said the Nigerians were using artillery and armored cars in an assault on Abagana, where Biafran forces are blocking the 65-mile highway from Onitsha to Enugu.

Orlu is about 20 miles north of Owerri and has been the target of a federal drive to cut Biafra in two. Umuahia is the headquarters of Ojukwu's secessionist regime and the target of federal drives from the north and south. Government spokesmen denied a major federal push was under way, saying the federal army is building up for a final attack against the Biafrans. They claim the secessionists have been squeezed into a 2,000-square mile enclave, one-tenth of what they claimed when they declared independence on May 29, 1967.

Legislature Sets Student Internships

HARTFORD, Conn. (AP) — An intern program to involve college and graduate students in the state legislature was announced Tuesday in the General Assembly. The program which would involve the students in much needed research and investigative work was announced by leaders of both parties. Minority Leader Stewart B. McKinney described the proposal as "enthusiastically bipartisan."

A power company spokesman said there was no way of telling how many homes and businesses lost their power. However, reports from several larger cities had thousands of consumers out of power. St. Petersburg reported up to 15,000 homes were affected. Tampa had 11,000 homes blacked out. Both cities receive their electricity from companies other than FP&L, but power flickered out because of a drain on interconnecting lines.

Oflando had 35 per cent of its population in darkness for about half an hour. The blackout hit all but a small portion of tourist-jammed Daytona Beach. Fort Lauderdale, hardest hit by the blackout, had no electricity for 15 minutes. Service there was restored by 7:45 p.m. In most areas it took from 20 minutes to an hour to restore service. Traffic lights winked out at intersections in many Florida cities, snarling rush-hour traffic. But FP&L spokesmen said the situation could have been much worse. They said safeguards built into the power distribution system prevented a southeast recurrence of the great blackout in the Northeast in 1967.

"Actually the story is what didn't go out, not what did," said John Hudburg, FP&L district manager in West Palm Beach. "Fifteen years ago the whole system would have gone out. The system worked like it was supposed to." Witnesses reported a large burst of steam escaped from the Fort Lauderdale plant just before the power blacked out. "It was like the r earing of a jet on takeoff," one witness said. As lights around the state went out, bulbs on the switchboard at Florida Power and Light flickered on. Newspapers in the blackout areas also received calls from residents who complained of ruined dinners. One woman said that the outage caught her for the second time in a month with pork chops in an electric frying pan.

Hospital Notes Patients Today: 299 ADMITTED YESTERDAY: Theodore Beland, 807 Center St.; Mrs. Mabel Burdick, 109 North St.; Richard Clapp, 400 Lake St., Coventry; Max Cohen Jr., South Windsor; Mrs. Anna Curious, 240 Union St.; Mrs. Richard Dreyer, 449 Oakland St., Wapping; Thomas Graham, 24 Hubbard St.; James Hamilton, 91 Oak Rd.; Dorothy Horvath, 19 Westminister Rd.; Diane Kaufman, 19 High Ridge Rd., Wapping; Mrs. Michael Martino, Windsor; Mrs. Agnes Miller, Rockville; Christopher Moran, 475 Hillard St., Waterford, East Hartford. Also, Daniel Mullen, 41 Washell Rd.; Mrs. Arlene Munroe, Glastonbury; Lisa Parent, Warehouse Point; Mrs. Ida Partridge, East Hartford; Bruce Phillips, Glastonbury; Clifford Blakey, Storrs; Joseph Romano, Forest Rd., Coventry; Mrs. Josephine Strimling, 120 Tunner St.; John Strom Jr., Broad Brook; Michael Sullivan, West Willington; Mrs. Cecile Vassello, 28 Brent Rd.; Anthony Walsh, Andover; Mrs. Helen Wilkes, 4 Barry Rd.

BIRTHS YESTERDAY: A son to Mr. and Mrs. Robert Wright Jr., Glastonbury; a daughter to Mr. and Mrs. Kenneth Jarvis, 126 French Rd., Bolton; a son to Mr. and Mrs. Barry Ferency, Glastonbury. DISCHARGED YESTERDAY: Mrs. Della Jensen, Stafford Springs; Mrs. Juliette Riport, 21 Milford Rd.; Joseph Fogarty, 1006 W. Middle Tpke.; Walter Kopchance, 250 Graham Rd., Wapping; Victor Bellone, Amston; Liane Daniels, 114 Parker St.; JoAnn Hesse, Columbia.

ALSO LOOK! FOR Red Tag Specials In Our Appliance and Furniture Departments

DO YOU HAVE A GRANTS CREDIT ACCOUNT? It takes only a minute to apply. Ask any sales person. STORE HOURS: 10 A.M. to 9 P.M. Grants KNOWN FOR VALUES...COAST TO COAST MANCHESTER SHOPPING PARKADE

NORTHEAST UTILITIES Hartford, Connecticut COMMON SHARES DIVIDEND The Board of Trustees has declared a quarterly dividend of 2 3/4 cents per share on the outstanding Common Shares, payable March 31, 1969 to shareholders of record at the close of business on March 3, 1969. NORMAN F. PLANTE Treasurer January 28, 1969

MEAT TOWN

1215 1/2 SILVER LANE—EAST HARTFORD "WHERE QUALITY ALWAYS EXCEEDS THE PRICE!" HOURS: Tues., Wed. 9 to 6 • Thurs., Fri. 9 to 6 Sat. 8 to 6 (Closed All Day Monday)

FRESH, LEAN, BONELESS PORK ROLLS 55c Lb. 100% All Meat! E-Z to Carve! An Excellent Rotisserie Item

"MINUTES FRESH," EXTRA LEAN GROUND CHUCK 69c Lb. MACHINE SLICED, AMERICAN COOKED SALAMI 59c Lb. SAVE 30c Lb.!

OUR OWN FRESH MADE ITALIAN SAUSAGE 69c Lb. Medium or Hot FANCY, PLUMP CORNISH HENS 69c ea. LARGE 24-oz. SIZE! Try This For Something Different!

SPECIAL FOR THURS., FRI. and SAT. WE RESERVE THE RIGHT TO LIMIT QUANTITIES

SALE

Westinghouse Automatic WASHER ECONOMY AGITATOR WASHER SALE \$178.88

RCA COLOR TV FIRST IN COLOR TV ZENITH COLOR TV SAVE SPECIAL LOW MID-WINTER SALE PRICES

FROST-FREE 16 PHILCO Instant Cold chills food faster, maintains cold better. PHILCO Power Saver cuts operating cost. SALE \$268.88

PHILCO HARDWOOD WALNUT AM-FM CONSOLE STEREO 218.88

ZENITH MEDITERRANEAN PECAN CREDENZA AM-FM STEREO \$327

WESTINGHOUSE 30" AUTOMATIC ELECTRIC RANGE \$188

30" DELUXE ROPER GAS RANGE \$177

WESTINGHOUSE STACK ON WASHER & DRYER Both \$377

CURTIS CM MATHES COLOR TV BREAKS THE PRICE NO MONEY DOWN EASY MONTHLY PAYMENTS \$448 SET UP DELIVERED CONNECTED EARLY AMERICAN or WALNUT

WE'RE CELEBRATING the 20th anniversary of KITCHENAID DISHWASHERS INSTALLED Including PLUMBING and WIRING AT THE SAME LOW PRICES Now is the time to buy! 20 years of good old-fashioned quality KitchenAid DISHWASHERS

NORGE GAS DRYER 148.88 FREE HOME TRIAL 90-DAY FREE TRIAL TO CONN. NATURAL GAS CORPORATION CUSTOMERS

Turnpike TELEVISION APPLIANCE NEXT TO STOP and SHOP BUDGET TERMS UP TO 36 MONTHS

5 YEARS SERVICE PROTECTION CONTRACT OPEN DAILY TO 6 P.M. WED., THURS., FRI. till 9

Turnpike TELEVISION APPLIANCE NEXT TO STOP and SHOP OPEN DAILY TO 6 P.M. WED., THURS., FRI. till 9



### Veteran Miner Says, 'I'll Go Back - Sure'

MT. MORRIS, Pa. (AP) — The wife cried softly on his shoulder as veteran coal miner Edward Brock, 67, broke from near death after a roof fall caused an electrical fire to ignite a coal seam in Humphrey's No. 7 mine early Tuesday. Some 120 other miners escaped when the fire was first discovered.

### Skating - Coasting

There is no skating, no skating, and no coasting, the park department reports.

### Josephine Herbert Novelists, Critic, Dies at Age 71

NEW YORK (AP) — Josephine Herbert, novelist, critic, and was correspondent, died Tuesday of cancer at New York Hospital. She was 71 years old.

### Kenya Minister Killed

NAIROBI, Kenya (AP) — Foreign Minister C.M.G. Kibaki was killed today when the car he was driving overturned in a Nairobi suburb. He was alone.

### Welfare Unit Deciding On Research Hiring

HARTFORD (AP) — The legislature's committee on welfare is to decide today whether or not to hire "a professional research staff" to conduct a study of the state's welfare operations.

### B-U-Y FAMOUS GUARDIAN PREMIUM 4-PLY TIRES

Size	Blackwall	E.P.T.
6.50x13	18.47	1.81
7.35x14	18.66	2.04
7.75x14	19.94	2.21
8.25x14	21.17	2.38
8.55x14	22.31	2.56
5.60x15	17.35	1.69
7.75x15	19.97	2.23
8.15x15	21.19	2.33
8.45x15	22.41	2.53

Wholesale Tire Co. 357 BROAD STREET—PHONE 642-2444

### In the Market for Books

Jacqueline Onassis is shown looking at books in an Athens, Greece, shop, while her shipping millionaire husband Aristotle Onassis was in Rome on business. With her is Greek stage actor, Alexis Minotis. (AP Photofax by cable from Athens)

### Tolland County Favorite Food Show To Be At TAC Building Next Week

The 1969 Favorite Food Show is scheduled for Feb. 8 at 2 p.m. at the Tolland County Agricultural Center, Rt. 39, Vernon.

### Wormer Will Produce, Street Star in 'So Love Returns'

Wormer will produce, street star in "So Love Returns," a romantic drama based on Robert Nathan's novel. Nathan will write the screenplay, with the film scheduled to go into production for Cinema Center Films next spring in Europe.

### THREE-JOB ONSKAR

NEW YORK (AP) — Oskar Werner will produce, direct and star in "So Love Returns," a romantic drama based on Robert Nathan's novel.

### Trapped when the fire broke

One of the 12 trapped men was hospitalized for observation. The other 11 men, and the rest of the midshift shift of 138 miners who got out through four separate escape routes, were not injured.

## PEGGY ANN SHOPS WAREHOUSE SALE STARTS TONIGHT!

BROAD STREET, MANCHESTER PARKADE  
● Open Wed., Thurs., Fri. 10 a.m. to 9 p.m. ●  
● Saturday 10 a.m. to 6 p.m. ●



WE HAVE TAKEN A LARGE SELECTION OF WOMEN'S WINTER FASHIONS from OUR WAREHOUSE and 6 STORES, and NOW OFFER THEM TO OUR MANCHESTER STORE AT VERY LOW PRICES!

GROUP OF BERMUDA SHORTS Reg. \$10. <b>\$5.99</b>	GROUP—TRIMMED AND UNTRIMMED COATS <b>1/2 PRICE!</b>	GROUP OF FULL SLIPS <b>1/2 PRICE!</b>
GROUP OF SWEATERS <b>1/3 OFF!</b>	GROUP OF PANTY HOSE and BRAS Values to \$5.00 <b>\$1.00</b>	GROUP OF WOOL SHIRTS SKIRTS - DRESSES <b>1/2 PRICE!</b>
GROUP OF SKIRTS <b>GREATLY REDUCED!</b>	GROUP OF LINED WOOL SLACKS Reg. \$14-\$16 <b>\$8.99</b>	GROUP OF RAIN COATS File Lined <b>\$40.00</b>
GROUP OF — 2 & 3-PIECE PANTS SUITS, JUMPERS <b>1/2 PRICE!</b>	GROUP OF SUEDE JACKETS <b>15% to 25% off!</b>	GROUP—IMPORTED RAIN COATS Reg. \$26 NOW <b>\$16.99</b>
	GROUP OF SLACKS Reg. \$10 <b>\$5.99</b>	

● ALL SALES FINAL — CASH ONLY ON GCP — GAP CHARGE CARDS ●

### END of MONTH CLEARANCE

Check These Values

**SAVE UP to 50%**  
ON THESE PRICES

**THURS., FRI., SAT. ONLY**

SPORT SHIRTS ONE LOT <b>1/2 Price</b>	TOPCOATS All wool. We have 10 left. Reg. 49.50. Now <b>28.88</b>
WOOL SHIRTS ONE LOT <b>1/2 Price</b>	ALL WEATHER COATS ONE LOT <b>1/2 Price</b>
TURTLENECK SWEATERS <b>1/2 Price</b>	CAR COATS and JACKETS Reg. 39.95. NOW <b>21.88</b>
NEHRU JACKETS <b>1/2 Price</b>	Reg. 27.50. NOW <b>17.88</b>
SUITS Reg. 85.00. NOW <b>59.50</b>	Reg. 25.00. NOW <b>16.88</b>
Reg. 70.00. NOW <b>49.50</b>	SPORT COATS Reg. 50.00. NOW <b>34.95</b>
	Reg. 45.00. NOW <b>32.50</b>

All Other Winter Men's Wear Greatly Reduced!

## GLENNEY'S MEN'S SHOP

Cor. Main and Birch Sts.

### Andover LWV Urge Board Appoint Town Charter Commission

The Andover League of Women Voters voted almost unanimously with 20 present to urge the Board of Selectmen to appoint a Charter Commission.

### Fire Razes Middletown Store Block

MIDDLETOWN, Conn. (AP) — Three businesses and five tenants were left without a home Wednesday morning when fire swept upwards through an old downtown building.

### Coventry Board of Finance Rejects IDC Request for Funds

The Board of Finance has turned down a request from the Industrial Development Commission (IDC) for \$150,000 to fund the IDC through until the end of the fiscal year.

### Vernon Skiing Show Tomorrow Night

A free ski show, "New Hampshire Ski Safari," will be presented tomorrow night at 8 at the Vernon Center Middle School.

### Fire Reported at Middletown

The fire was reported at about 6:45 a.m. by a man in the building and was still burning at mid-morning.

### Board of Finance Members

The board Monday night also held an executive session, explained only as having to do with the tax collector's office.

## Pinehurst

Brings You The Very Finest in Good Things To Eat Plus LOW PRICES!

Open Thurs. & Fri. 9 — or 8 A.M. Thurs., Fri. and Saturday

Rich's Frozen Coffee Rich <b>17c</b>	Campbell's TOMATO SOUP CAN	Scott Sale Jumbo Size SCOTT TOWELS
What A Value! Proctor and Gamble	Pinehurst Nabisco Cookie Specials	White or Colored 3 Jumbo Rolls <b>93c</b>
John Tani of 175 Main St., Manchester, wants you to try this new product. BIZ	CHOCO PINWHEELS 46c	Limit 5 Cans Please
At Pinehurst SALADA TEA BAGS <b>89c</b> 100's	PEANUT LOGS 43c	OREO COOKIES Box 46c
At Pinehurst JELL-O GELATIN <b>3 FOR 25c</b>	At Pinehurst COTT'S 8 PACK <b>89c</b> 8 PACK	
PORK ROASTS Delicious	Pinehurst Frozen Foods	
Are An Economical Winter Buy	International Recipe Birds Eye Vegetables have joined our best seller list along with Miltaw Stuffed Clams.	
VERY MEATY COUNTRY RIBS braise...knot <b>49c</b> lb	Lean Chopped Sirloin Deluxe Patties...lb. <b>\$1.09</b>	
CENTER CUT PORK CHOPS <b>99c</b> lb	Lean Chuck Patties...lb. <b>89c</b>	
PORK 3 meals in 1 strip <b>69c</b> lb	Tiny tender bite-sized cubes for delicious Beef Stew...lb. <b>89c</b>	
Remember to cook the meat to the new recommended internal temperature of 170 degrees and save precious meat, time and cooking time.	Lean Round Ground...lb. <b>99c</b>	
TIME TABLE FOR ROASTING PORK LOIN	Pinehurst Italian Style Medium Hot Sausage lb. <b>89c</b>	
Approximate Roasting Time	Tender Cube Steaks...lb. <b>\$1.30</b>	
Cut Weight Hours	New York Cut Sirloins...lb. <b>99c</b>	
Center Loin 3 to 4 lbs. 3 1/2 to 4	Large bone and other best Sirloins and Porterhouse with double tenderloins...lb. <b>\$1.35</b>	
Half 4 to 6 lbs. 3 1/2 to 4	Simply wonderful LAMB LEGS	
Ends 3 to 4 lbs. 3 to 3 1/2	Tenderloin Corned Beef and Sirloin Tip Oven Roasts	
Two Fine Lean Bacons At A Low Price		
Armour's Star Mrs.-Cured, Sliced BACON <b>79c</b> lb		
Miss Iowa Lean Bacon BACON <b>69c</b> lb		

Two Fine Lean Bacons At A Low Price

Armour's Star Mrs.-Cured, Sliced BACON **79c** lb

Miss Iowa Lean Bacon BACON **69c** lb

For Better Meats Come To Pinehurst...  
DUBUQUE LEAN 5 Lb. Can of Ham **\$4.49**

We have Boneless Sirloin Hips and Boneless Sirloin Butts for your freezer.

Lean Chopped Sirloin Deluxe Patties...lb. **\$1.09**

Lean Chuck Patties...lb. **89c**

Tiny tender bite-sized cubes for delicious Beef Stew...lb. **89c**

Lean Round Ground...lb. **99c**

Pinehurst Italian Style Medium Hot Sausage lb. **89c**

Tender Cube Steaks...lb. **\$1.30**

New York Cut Sirloins...lb. **99c**

Large bone and other best Sirloins and Porterhouse with double tenderloins...lb. **\$1.35**

Simply wonderful LAMB LEGS

Tenderloin Corned Beef and Sirloin Tip Oven Roasts

Sofa Reg. \$94.50 Now **85.**

Sofa and Chair Reg. \$149.50 Now **127.**

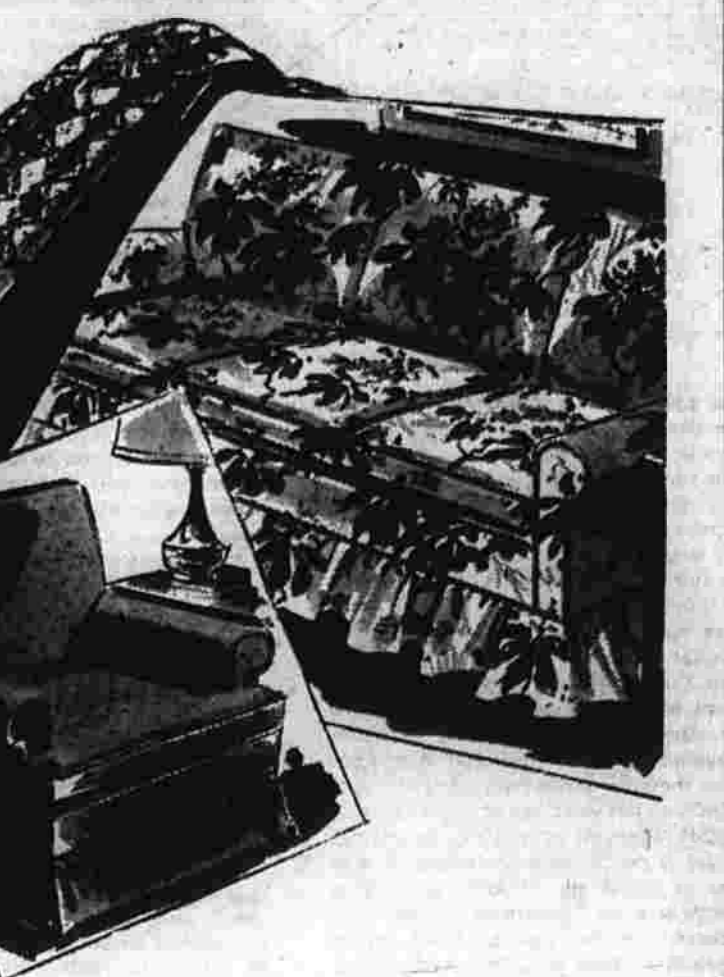
Sofa and Two Chairs Reg. \$195.50 Now **169.**

REUPHOLSTERING - Watkins reupholstering service can make your old chairs and sofa retain their beauty as when new... in many cases better. You choose your covering from the largest collection of fabrics in the area and right in your home, if you desire, to perfectly fit your decoration scheme. Choose from velvets, formal damasks, tweeds, solids, bold prints, and stripes. Your furniture is stripped to the bare frame, loose joints are reglued, old webbing replaced, springs are retied, and new fillings added. Fabrics are meticulously hand cut, matched and tailored to Watkins traditional quality. If quality is what you're after, we provide it. Call 643-5171 now for Shop-at-Home Service. Budget terms available.

Open 9 A.M. to 5:30 P.M. - Closed Monday  
Open Thursday and Friday until 9 P.M.

Chosen To Serve American Bar Unit  
CHICAGO (AP) — Ronald Hagan of Hartford, Conn., is one of five men chosen to serve three years on the Board of Governors of the American Bar Association (ABA).

ALBUQUERQUE (AP) — A chief who took a cement mixer didn't let the size of the job deter him.



## Watkins OF MANCHESTER

Choose your fabric now for Slipcovers and Reupholstering during Watkins Semi-Annual Sale!

SLIPCOVERS - Create an entirely new look for your dull, shabby sofa and chairs during Watkins Semi-Annual Furniture Sale. Choose from the largest collection of Vat-dyed and Pre-shrunk fabrics, which are Scotchgard or Zepel treated for soil repellency. Call 643-5171 now for our Shop-at-Home Service and our representative will call on you at your home with samples at no extra cost or obligation. Your slipcovers are skillfully cut, and pinned to your furniture to insure proper fit. Fabrics are carefully matched, welts are hand made, and self welted for added beauty. Box or kick pleated skirts are expertly tailored. We will then deliver and install them to insure added customer satisfaction. Budget terms are available. Prices include fabric and labor for: (1.) Up to 78" sofa with 2 or 3 cushions. (2.) 1 cushion chair. Wing and channel back pieces priced slightly higher. (fabric only). Arm caps extra.

Sofa Reg. \$94.50 Now **85.**

Sofa and Chair Reg. \$149.50 Now **127.**

Sofa and Two Chairs Reg. \$195.50 Now **169.**

REUPHOLSTERING - Watkins reupholstering service can make your old chairs and sofa retain their beauty as when new... in many cases better. You choose your covering from the largest collection of fabrics in the area and right in your home, if you desire, to perfectly fit your decoration scheme. Choose from velvets, formal damasks, tweeds, solids, bold prints, and stripes. Your furniture is stripped to the bare frame, loose joints are reglued, old webbing replaced, springs are retied, and new fillings added. Fabrics are meticulously hand cut, matched and tailored to Watkins traditional quality. If quality is what you're after, we provide it. Call 643-5171 now for Shop-at-Home Service. Budget terms available.

Open 9 A.M. to 5:30 P.M. - Closed Monday  
Open Thursday and Friday until 9 P.M.



People in The News

Shouras Honored On 75th Birthday NEW YORK (AP) — Sylvia...

actor whose career spanned 30 years in vaudeville, movies, radio and television, died Monday...

12th Circuit Court Cases

ROCKVILLE SESSION A Rockville man was charged yesterday in connection with...

Painting Job Let by Town

A \$2,000 contract has been awarded to the Thomas Heywood Co. of Hartford for painting...

New Iraqi Spy Trial Reported Under Way

Continued from Page One) The solution would be through concert of the Big Four powers...

In Good Humor

There was no lack of laughter as the Senate Ladies Red Cross Group welcomed Mrs. Richard Nixon...

Nixon Meets With Council On N-Treaty

Continued from Page One) The administration is urgently straining for a settlement...

Fight Inflation - Why Pay More?

Go to Shop-Rite where you have 32 different kinds of green beans to choose from...

Deaths in The Nation

SHAD E. GRAHAM HOUSTON, Tex. (AP) — Shad E. Graham, 72, longtime Broadway stage designer and Hollywood film producer, died Tuesday...

Deaths in The Nation

FRANK P. FERRELL JR. DANVILLE, Va. (AP) — Frank P. Ferrell Jr., 60, vice president of Tobacco Co., died Monday after a year's illness...

Deaths in The Nation

CHARLES WINNINGER PALM SPRING, Calif. (AP) — Charles Winninger, 84, veteran actor...

Deaths in The Nation

Permanent Wave Specials Hair Cut Included \$8.50 - \$10.00 - \$12.50

Deaths in The Nation

Wigs Cleaned and Styled \$7.00 No Appointment Necessary on Tuesday & Wednesday CLOSED MONDAY

Deaths in The Nation

PETITE BEAUTY SALON 84 CHURCH ST. 648-8322

KING'S SELF-SERVICE DEPT STORE BROAD ST., MANCHESTER • OPEN 10 to 10

Wednesday, Thursday, Friday, Saturday!

Sale Larry Mathews FASHION SHOW SAMPLES AND DISPLAY MODELS OF Wigs and Hairpieces



All 100% Human Hair 9.95-19.95-29.95

- Handmade European Wigs Imported Wiglets European Pony Tails European Falls Imported Wigs Handmade Wigs European Wiglets

Fabulous high fashion wigs and hairpieces at a fraction of their original prices!

100% HUMAN HAIR WIGLETS 4.88

New Iraqi Spy Trial Reported Under Way

Continued from Page One) The solution would be through concert of the Big Four powers...



In Good Humor There was no lack of laughter as the Senate Ladies Red Cross Group welcomed Mrs. Richard Nixon...

Nixon Meets With Council On N-Treaty

Continued from Page One) The administration is urgently straining for a settlement...

Know how to sell YOURSELF



Attend a Free Demonstration meeting of the World Famous DALE CARNEGIE COURSE...

Why Did They Take The DALE CARNEGIE COURSE?

They realized that today in business and industry it is important to communicate effectively...

Attend A Free Demonstration Meeting EAST HARTFORD MANCHESTER

CASUAL VILLAGE MANCHESTER

SALE OUR ENTIRE STOCK OF WOMEN'S BOOTS Reg. \$12. to \$27. 7.90 to 15.90

Fabulous! ICE SKATE SALE MEN'S • WOMEN'S • BOYS' • GIRLS'

boys' hockey sizes 12 to 2 boys' figure sizes 12 to 2 men's figure sizes 7 to 9 men's hockey sizes 7 to 13 girls' figure sizes 11 to 1 women's figure sizes 5-6-9-10-11

CASUAL VILLAGE MANCHESTER

sale! famous make boys' and prep apparel special purchase! leading boys' outerwear maker just 60... boys' 8 to 20 nylon parkas and jackets

School Board Gets Backing On Appeal of Bus Decision

Some townpeople have expressed sympathy toward the school board's decision to appeal the state board's ruling on the bus decision.



Commandant Major Nathan G. Agostinelli...

Travel Film, Dinner-Dance On Womens Club Schedule

The Ellington Womens Club will be held Feb. 8 at 8 p.m. in the Ellington Congregational Church.

Teen Center Report Due Before Council of PTO's

The Council of PTO's will meet Feb. 5 at the Skinner Road School to hear a report from the Teen Center Committee.

Business Mirror

NEW YORK (AP) — The program of any government administration must follow a path that is clear and consistent.

Pope Deplores Iraq Hangings

VATICAN CITY (AP) — Pope Paul VI said today that the hanging of nine Jews in Iraq last week was a "barbaric and inhuman act."

Head Start Gets Funds

Allan Chesterton, director of federal projects for Manchester, received notification late yesterday from the Community Renewal Team of Greater Hartford.

First National Stores advertisement for Spaghetti Tomatoes in Puree, featuring prices for 1 lb and 28 oz cans.

First National Stores advertisement for Italian Bread, featuring prices for 4 loaves and 2 lbs.

First National Stores advertisement for Seafood Dept. featuring prices for Shrimp, Swordfish Steaks, and other seafood items.

First National Stores advertisement for Magnifico Progresso Olive Oil and Tomatoes, featuring prices for 5 gal and 28 oz cans.

Engaged

The engagement of Miss Karen Louise Anderson of Manchester to Roy William Culver of Buckland has been announced.

Anderson-Culver

The wedding is planned for May 31 at St. James' Church.

3 Yale Students Fall to Deaths Climbing Peak

Three Yale University students died in a mountain-climbing expedition in the Adirondacks.

AP Survey Turns Up Crop Of 'Small, Splendid Efforts'

An AP survey turned up a fine crop of small, splendid efforts in the area of volunteerism.

State Senators Vote To End Filibuster WASHINGTON (AP) — Both House and Senate voted today to end the filibuster.

Gustafson's Shoe Store advertisement for a clearance sale, featuring prices for shoes and a 20% off coupon.

Gustafson's Shoe Store advertisement for a double money bingo promotion, featuring a \$2,000 cash prize.

Advertisement for Double Money Bingo, featuring a \$2,000 cash prize and names of winners.

First National Stores advertisement for Imported Italian Tomato Paste and Filippa Berio Olive Oil.

First National Stores advertisement for Semi-Boneless Pork Chops, featuring prices for 1 lb and 2 lbs.

First National Stores advertisement for Economy Corner featuring prices for Beef Liver, Meaty Oxtails, and other meats.

First National Stores advertisement for Frutti e Legumi Freschi featuring prices for Broccoli, Carote, and other fresh produce.

Advertisement for a sweepstakes with prizes including a Mini Mink Coat, a 1969 Barracuda, and a G.E. Porta Color Personal T.V.

Radio advertisement listing various radio stations and their broadcast schedules.

Advertisement for Finast Italian Foods Festival, featuring a variety of Italian food products.

Advertisement for Brink's Co. Fire featuring fire insurance services.

Advertisement for a five-day forecast, including weather predictions for the week.

Advertisement for the Presbyterian Centennial, celebrating 100 years of the denomination.



Obituary Youth Killed In Accident

Anthony Gioianni, 30, of Bradford, formerly of Hebron, died in an auto accident...

Grand List At Record

The John P. Tierney Funeral Home, 219 W. Center St., is in charge of arrangements.

Homeowners May Get Walk Repair Option

Manchester homeowners who refuse to permit blacktop sidewalk repairs in front of their homes may get the option...

College Money Bags Found in Hartford

Police have recovered two money bags in a trash can on Homestead Ave. in Hartford...

About Town

Manchester Gilbert and Sullivan Workshop will rehearse for the production of 'The Mikado'...

Business Trends

By THE ASSOCIATED PRESS Americans are getting out of their homes and into the kitchen and into the restaurant in growing numbers.

Living Costs Climb Slows In December

Costs of living in the United States climbed at a slower rate in December than in November...

Slate Named At Church

A budget of \$110,000 for 1969 was approved and officers for the year were elected Monday night...

Cemetery Rules May Be Changed

An amendment to the Cemetery Ordinance, aimed at conserving the available space in town cemeteries...

Public Records

Warrant Deeds Leonard J. Lawson and Dorothy E. Lawson to Rudolph J. Kleiman Jr. and Gloria-Jean Lewis...

Ellington Wife Breaks Hip, Husband Nabbed

William Zdzanis of 6 Adrian Ave., Ellington was charged with assault on a woman...

Police Log

Richard Altus, 38, of 166 York St., was charged with violation of the robbing dog ordinance...

Perform for Children

Pete Savoli and his partner, Willy O'Wood, stars of Pete and Willy's 'Tree Trunk' television show...

Board Hearings On Funds Listed

The Manchester Board of Directors will hold public hearings and will consider action on additional appropriations...

Agrees on Middle East Danger

United Nations Secretary-General U. Thant gestures at news conference in the U.N. in New York...

South Viets Set Truce During Tet

The Viet Cong broadsheet said government soldiers controlled by the Viet Cong to visit their families...

Two Planes Winging For Hijack Victims

The Federal Aviation Administration in Miami said Sullivan was the very name of a young man who was virtually unknown...

Coeducation At Vassar Now, 80 Men Arrive

By BRIAN B. KING Associated Press Writer ALBANY, N.Y. (AP) — Coeducation, which has been in progress since 1967, is now in full swing...

Sewing Circle Helps Junior Achievement Club

The members of the Tuesday Sewing Circle of West Hill Garden have pledged their support and aid to a project...

Board Hearings On Funds Listed

The Manchester Board of Directors will hold public hearings and will consider action on additional appropriations...

Police Log

Richard Altus, 38, of 166 York St., was charged with violation of the robbing dog ordinance...

Perform for Children

Pete Savoli and his partner, Willy O'Wood, stars of Pete and Willy's 'Tree Trunk' television show...

Board Hearings On Funds Listed

The Manchester Board of Directors will hold public hearings and will consider action on additional appropriations...

Agrees on Middle East Danger

United Nations Secretary-General U. Thant gestures at news conference in the U.N. in New York...

South Viets Set Truce During Tet

The Viet Cong broadsheet said government soldiers controlled by the Viet Cong to visit their families...

Two Planes Winging For Hijack Victims

The Federal Aviation Administration in Miami said Sullivan was the very name of a young man who was virtually unknown...

Coeducation At Vassar Now, 80 Men Arrive

By BRIAN B. KING Associated Press Writer ALBANY, N.Y. (AP) — Coeducation, which has been in progress since 1967, is now in full swing...

Sewing Circle Helps Junior Achievement Club

The members of the Tuesday Sewing Circle of West Hill Garden have pledged their support and aid to a project...

Board Hearings On Funds Listed

The Manchester Board of Directors will hold public hearings and will consider action on additional appropriations...

Police Log

Richard Altus, 38, of 166 York St., was charged with violation of the robbing dog ordinance...

Perform for Children

Pete Savoli and his partner, Willy O'Wood, stars of Pete and Willy's 'Tree Trunk' television show...

Board Hearings On Funds Listed

The Manchester Board of Directors will hold public hearings and will consider action on additional appropriations...

Agrees on Middle East Danger

United Nations Secretary-General U. Thant gestures at news conference in the U.N. in New York...

South Viets Set Truce During Tet

The Viet Cong broadsheet said government soldiers controlled by the Viet Cong to visit their families...

New York City Snarled by Ice

NEW YORK (AP) — Trains, planes and foot travelers are slowed to a crawl this morning by a sheet of ice that covered the city and its suburbs...

Suitable Rollers Are Made for All Paint Jobs

Nowadays, there's a paint roller for every job. Whether you're painting inside or out, on plaster, wood, metal, concrete or any other material...

3 Leave Prison, Not Yet Freed In Brink's Case

WALPOLE, Mass. (AP) — Three men convicted of participating in the 1962 robbery of \$12 million from the Brink's store in Waltham, Mass., were freed from prison...

SNETCO Queried On Rate Hike

HARTFORD, Conn. (AP) — Cross-examination of Southern New England Telephone Company officials is scheduled to begin today...

Possum Causes Crash

Because a possum decided to waddle across North Rd. at a public hearing, a young man was killed and his car totaled...

Married Couple Dies In Crash

A 5 to 6 per cent increase in the retail price index was expected this year, according to industry sources...

Possum Causes Crash

Because a possum decided to waddle across North Rd. at a public hearing, a young man was killed and his car totaled...

Married Couple Dies In Crash

A 5 to 6 per cent increase in the retail price index was expected this year, according to industry sources...

Possum Causes Crash

Because a possum decided to waddle across North Rd. at a public hearing, a young man was killed and his car totaled...

Married Couple Dies In Crash

A 5 to 6 per cent increase in the retail price index was expected this year, according to industry sources...

Possum Causes Crash

Because a possum decided to waddle across North Rd. at a public hearing, a young man was killed and his car totaled...

Married Couple Dies In Crash

A 5 to 6 per cent increase in the retail price index was expected this year, according to industry sources...

Possum Causes Crash

Because a possum decided to waddle across North Rd. at a public hearing, a young man was killed and his car totaled...

Married Couple Dies In Crash

A 5 to 6 per cent increase in the retail price index was expected this year, according to industry sources...

Possum Causes Crash

Because a possum decided to waddle across North Rd. at a public hearing, a young man was killed and his car totaled...

Married Couple Dies In Crash

A 5 to 6 per cent increase in the retail price index was expected this year, according to industry sources...

Possum Causes Crash

Because a possum decided to waddle across North Rd. at a public hearing, a young man was killed and his car totaled...

Married Couple Dies In Crash

A 5 to 6 per cent increase in the retail price index was expected this year, according to industry sources...

Possum Causes Crash

Because a possum decided to waddle across North Rd. at a public hearing, a young man was killed and his car totaled...

Married Couple Dies In Crash

A 5 to 6 per cent increase in the retail price index was expected this year, according to industry sources...

Possum Causes Crash

Because a possum decided to waddle across North Rd. at a public hearing, a young man was killed and his car totaled...

Married Couple Dies In Crash

A 5 to 6 per cent increase in the retail price index was expected this year, according to industry sources...

Possum Causes Crash

Because a possum decided to waddle across North Rd. at a public hearing, a young man was killed and his car totaled...

Married Couple Dies In Crash

A 5 to 6 per cent increase in the retail price index was expected this year, according to industry sources...

Possum Causes Crash

Because a possum decided to waddle across North Rd. at a public hearing, a young man was killed and his car totaled...

Married Couple Dies In Crash

A 5 to 6 per cent increase in the retail price index was expected this year, according to industry sources...

Possum Causes Crash

Because a possum decided to waddle across North Rd. at a public hearing, a young man was killed and his car totaled...

Married Couple Dies In Crash

A 5 to 6 per cent increase in the retail price index was expected this year, according to industry sources...

Possum Causes Crash

Because a possum decided to waddle across North Rd. at a public hearing, a young man was killed and his car totaled...

Married Couple Dies In Crash

A 5 to 6 per cent increase in the retail price index was expected this year, according to industry sources...

Possum Causes Crash

Because a possum decided to waddle across North Rd. at a public hearing, a young man was killed and his car totaled...

Married Couple Dies In Crash

A 5 to 6 per cent increase in the retail price index was expected this year, according to industry sources...

Possum Causes Crash

Because a possum decided to waddle across North Rd. at a public hearing, a young man was killed and his car totaled...

Married Couple Dies In Crash

A 5 to 6 per cent increase in the retail price index was expected this year, according to industry sources...

Married Couple Dies In Crash

A 5 to 6 per cent increase in the retail price index was expected this year, according to industry sources...

Possum Causes Crash

Because a possum decided to waddle across North Rd. at a public hearing, a young man was killed and his car totaled...

Married Couple Dies In Crash

A 5 to 6 per cent increase in the retail price index was expected this year, according to industry sources...

Possum Causes Crash

Because a possum decided to waddle across North Rd. at a public hearing, a young man was killed and his car totaled...

Married Couple Dies In Crash

A 5 to 6 per cent increase in the retail price index was expected this year, according to industry sources...

Possum Causes Crash

Because a possum decided to waddle across North Rd. at a public hearing, a young man was killed and his car totaled...

Married Couple Dies In Crash

A 5 to 6 per cent increase in the retail price index was expected this year, according to industry sources...

Possum Causes Crash

Because a possum decided to waddle across North Rd. at a public hearing, a young man was killed and his car totaled...

Married Couple Dies In Crash

A 5 to 6 per cent increase in the retail price index was expected this year, according to industry sources...

Possum Causes Crash

Because a possum decided to waddle across North Rd. at a public hearing, a young man was killed and his car totaled...

Married Couple Dies In Crash

A 5 to 6 per cent increase in the retail price index was expected this year, according to industry sources...

Possum Causes Crash

Because a possum decided to waddle across North Rd. at a public hearing, a young man was killed and his car totaled...

Married Couple Dies In Crash

A 5 to 6 per cent increase in the retail price index was expected this year, according to industry sources...

Possum Causes Crash

Because a possum decided to waddle across North Rd. at a public hearing, a young man was killed and his car totaled...

Married Couple Dies In Crash

A 5 to 6 per cent increase in the retail price index was expected this year, according to industry sources...

Possum Causes Crash

Because a possum decided to waddle across North Rd. at a public hearing, a young man was killed and his car totaled...

Married Couple Dies In Crash

A 5 to 6 per cent increase in the retail price index was expected this year, according to industry sources...

at Davidson & Leventhal in Manchester Parkade shop tonight and tomorrow night until 9 p.m.

selected clearances . . . limited quantities

tomorrow—last day of our 5-store, store-wide sale!

DAVIDSON & LEVENTHAL

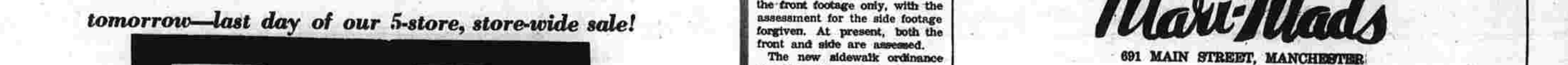
D&L — Open Mon., Wed., Thurs., Fri. Nights 11-9, Tues. & Sat. 11-6



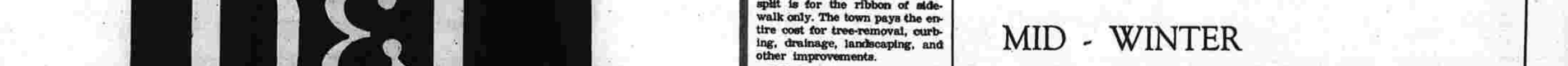
Sewing Circle Helps Junior Achievement Club



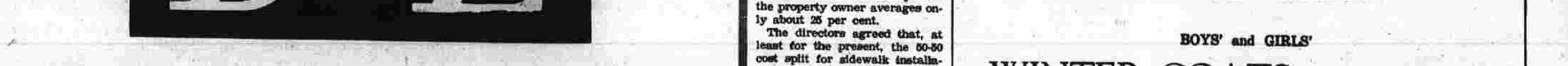
Fire Calls



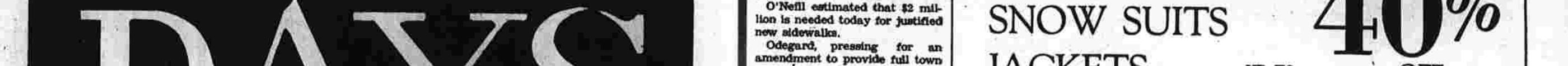
Perform for Children



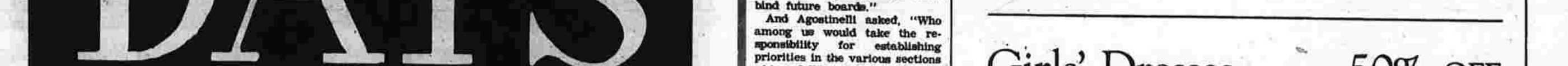
Board Hearings On Funds Listed



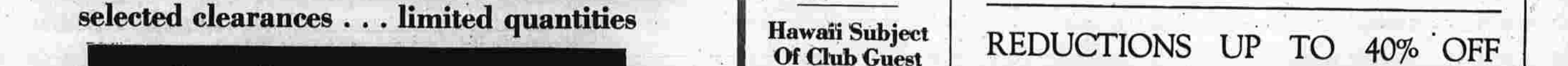
Board Hearings On Funds Listed



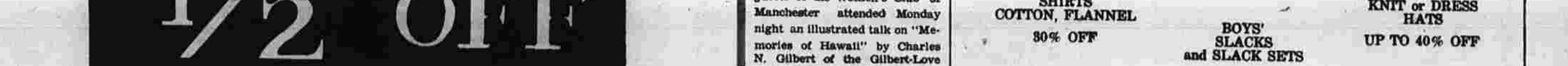
Board Hearings On Funds Listed



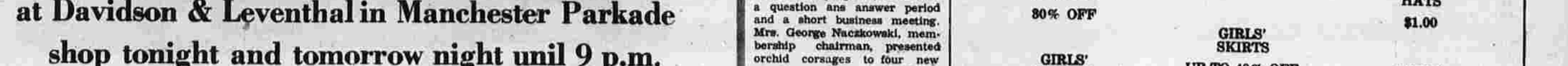
Board Hearings On Funds Listed



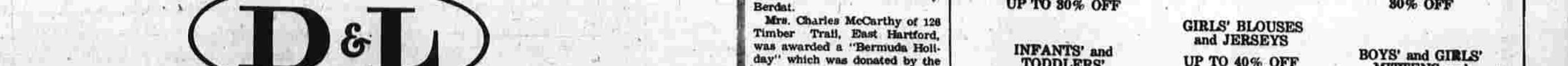
Board Hearings On Funds Listed



Board Hearings On Funds Listed



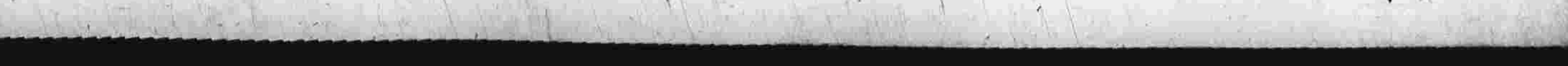
Board Hearings On Funds Listed



Board Hearings On Funds Listed



Board Hearings On Funds Listed



Board Hearings On Funds Listed



Board Hearings On Funds Listed



**VALUABLE COUPON**

**25' OFF**

With This Coupon and Purchase of 2 cut up

**FRYERS**

Coupon Good thru Sat., Feb. 1st  
LIMIT: ONE COUPON PER CUSTOMER

**CHEF BOY-AR-DEE**

**CHEESE PIZZA**

12-oz. pkg. **45¢**

**GRAND UNION**

**SOLID BUTTER**

1-lb. pkg. **65¢**

**VALUABLE COUPON**

**20' OFF**

With This Coupon and Purchase of 1/2-gal. Your Favorite

**ICE CREAM**

Coupon Good thru Sat., Feb. 1st  
LIMIT: ONE COUPON PER CUSTOMER

**VALUABLE COUPON**

**MIRACLE WHIP**

qt. jar **39¢** WITH THIS COUPON

Coupon Good thru Sat., Feb. 1st  
LIMIT: ONE COUPON PER CUSTOMER

**COFFEE**

**MAXWELL HOUSE**

1-lb. can **59¢**

**CAMPBELL'S**

**TOMATO SOUP**

10-oz. can **10¢**

**VALUABLE COUPON**

**100 STAMPS**

With This Coupon and Purchase of 6-pkgs. Your Favorite

**FROZEN VEGETABLES**

Coupon Good thru Sat., Feb. 1st  
LIMIT: ONE COUPON PER CUSTOMER

**Engaged**

The engagement of Miss Little Violet May Keith of Rockville to Theodore Robert Gottier of Tolland has been announced by her parents, Mr. and Mrs. Silvery B. Keith of 38 Range Hill Dr.

Her fiancé is the son of Mr. and Mrs. Edward Gottier of Sugar Hill Rd.

Miss Keith is a graduate of Manchester High School. She is employed in the production engineering department at Pratt and Whitney Division of United Aircraft, East Hartford. Mr. Gottier is self-employed at Gottier and Sons Dairy Farm in Tolland.

An April wedding is planned.

**Counter Height Should Vary with Worker's Size**

By VIVIAN BROWN

AP Newsfeatures Writer

You may be throwing your body out of alignment if your kitchen counters are the wrong height for your size, says Prof. Ross Steidl of the New York State College of Home Economics at Cornell University. The college had a booth at the Kitchen Showcases in New York where kitchen ideas for 1969 were exhibited.

"Women are adjusting to kitchens and not realizing they are working with arms extended and getting arm fatigue, shorter women are working with surfaces that are too high, and in lifting things from their shoulders, they are tiring that part of their body out of alignment. This is true even though they maintain such positions for only five minutes," she says.

It is a physiological fact, she points out, that slowed blood vessels cause muscle fatigue.

Prof. Steidl had a chart marked to determine distance from floor to elbows. Forty inches is average. You deduct three inches to determine the ideal work surface for you. But other jobs require even lower surfaces.

Studies at Cornell have shown that to serve food, stack dishes and make sandwiches the counter should be three inches below the elbow. To mix batter, beat with an electric portable mixer, chop nuts or vegetables, the counter or pull-out board should be six to seven inches below your elbow. The rim of a sink should be two to three inches below the cooking surface of a range three to seven inches below. A fully opened oven door one to seven inches below the elbows will permit easy turning of roasts, etc.

If you'd like to measure your elbow height do this: Wear shoes worn usually in the kitchen, mark a corner wall in inches and stand straight against it, your back to the corner. Hold the upper arm generally used for food work against the lined wall, bend it at a right angle and mark the spot with the other hand.

This information may come in handy when you are buying or building a new house. Pass the information on to your builder and kitchen dealer. They may protest that there is no call for adjustable kitchen counter units. But, "if enough people ask for them, manufacturers will make them," Prof. Steidl believes.

Ideally work surface heights would be changeable so that a kitchen will fit more than one owner.

One man who built an all-electronic house designed the ultimate in kitchen cabinets for his under-5-foot wife. She pushed buttons to bring the cabinets down to her level.

Elsewhere in the show sponsored by the American Institute of Kitchen Dealers, were new cabinet-decorative wood-tone designs over colorful plastic, doors with removable colored inserts and new appliances, cleaning systems and structural ideas.

Many kitchen appliances were in copper and gold tones and almost all cabinets shown were wood or wood-tone in brown, smoky blues or pickled. Countertop colors ranged from powder blue to raspberry.

For The Whole Family

**WELDON'S**

**MULTIPLE**

**VITAMINS**

**ONE-A-DAY**

**\$2.98**

WELDON DRUG CO.

**PORK SHOULDER**

**FRESH CALAS**

4 to 6-lb. AVG. **39¢** lb.

**HOT OR SWEET - ITALIAN**

**SAUSAGE**

**75¢** lb. PURE PORK

**ITALIAN STYLE**

**VEAL CUTLETS**

**1.59** lb.

**GRAND UNION**

**SUPERMARKETS**

**ARMOUR**

**Canned Ham**

4-lb. can **379**

**GRAND UNION**

**Canned Ham**

4-lb. size **399**

**SAVE UP TO 10% ON LARGE Family Size Packs**

**CHOPS & STEW** 65¢

**LAMB COMBINATION** 65¢

**ROAST BEEF** 85¢

**STEWING BEEF** 85¢

**TENDER, MEATY**

**VEAL CHOPS** Rib 89¢ Loin 99¢

**BOLOGNA OR**

**Liverwurst**

1-lb. **49¢** By The piece

**GRAND UNION**

**SLICED BOLOGNA** 1-lb. **79¢**

**SHREKANDORA** 2-lb. **139**

**TURKEY LOAF** 3-lb. **99¢**

**GRAND UNION**

**SLICED MEATS** 3-pkg. **99¢**

**TASTY Dairy Foods**

**GRAND UNION**

**Cream Cheese**

3-oz. pkg. **10¢**

**GRAND UNION**

**MUNSTER SLICES** 8-oz. **44¢**

**FLORA DANICA** 8-oz. **49¢**

**IMPORTED CAMEBERT** 8-oz. **49¢**

**TREASURE CAVE** 4-oz. **35¢**

**BLUE CHEESE** 4-oz. **35¢**

**PILLSBURY - KING** 2-oz. **57¢**

**CINNAMON ROLLS** 2-oz. **57¢**

**Nancy Lynn** BAKED GOODS

**FRESHBAKE-KING SIZE**

**White Bread**

1-lb. 4-oz. loaves **4'100**

**NANCY LYNN - CINNAMON**

**RAISIN BUNS** 12-oz. **39¢**

**NANCY LYNN - GOLD OR MARBLE**

**POUND CAKE RING** 2-lb. **89¢**

**NANCY LYNN**

**FRENCH CRUMB CAKE** 8-oz. **41¢**

**NANCY LYNN - COUNTRY STYLE**

**WHITE BREAD** 1-lb. **49¢**

**EXTRA STAMPS WITH PURCHASE OF NANCY LYNN**

**LEMON or PINEAPPLE PIE**

**U.S.D.A. CHOICE**

**Beef Short Ribs** **59¢** lb.

**ECONOMIC & TASTY**

**Pork Chops** **59¢** lb. BLADE CUT

**DELICIOUS**

**JONES SAUSAGE** 1-lb. **79¢**

**BOUILLON SAUSAGE** 1-lb. **79¢**

**SOCIETY HAMS** 3-4 lbs. **139**

**DEERFOOT** 1-lb. **99¢**

**LINK SAUSAGE** 1-lb. **99¢**

**ALL MEAT - ALL BEEF**

**ARMOUR FRANKS** 3-pkg. **69¢**

**SWISS OR**

**CUBE STEAKS** 1-lb. **1.09**

**GRAND UNION - BUTTERED**

**BEEF STEAKS** 7-oz. **45¢**

**STEAK SAUSAGE** 1-lb. **89¢**

**SWORDFISH STEAKS** 8-oz. **89¢**

**FRESH COUNTRY**

**FILLET of SOLE** 1-lb. **98¢**

**USDA CHOICE**

**BONELESS CROSS RIB OR BOTTOM**

**Round Roast**

**89¢** lb.

**Boneless Rump Roast** 1-lb. **99¢**

**Eye Round Roast** REG. lb. **1.19** SEAMED lb. **1.29**

**Fresh Tastes Best!**

SHOP GRAND UNION FOR THE FRESHEST PRODUCE IN TOWN

**SWEET EATING**

**Temple Oranges**

**10 for 49¢**

**YELLOW ONIONS** U.S. #1 GRADE 5-lb. **49¢**

**GARDEN FRESH BOSTON LETTUCE** head **19¢**

**FRESH WASHED SPINACH** 10-oz. **25¢**

**ASSORTED - LOW CALORIE**

**FRUIT DRINKS** 12-oz. **39¢**

**VINE RIPENED**

**Tomatoes** 1-lb. **29¢**

**FLA. - SEEDLESS**

**Grapefruit** 5-lb. **59¢**

**FIRM - RED RIPE** **PINK OR WHITE**

**Woman's Day Encyclopedia of Cookery**

**Vol. 1 only 89¢. Vol. 2 only 1.49**

**GRAND UNION**

**SUPERMARKETS**

**Frankfurts**

1-lb. pkg. **59¢**

**SERVED BY EXPERTS**

**Delicatessen** WHERE AVAILABLE

**DELICATESSER PREPARED - SALAD**

**VIRGINIA HAM** 1-lb. **79¢**

**WISCONSIN'S FRESH**

**SWISS CHEESE** 1-lb. **49¢**

**FRESHLY MADE**

**MACARONI SALAD** 1-lb. **25¢**

**ALL WHITE MEAT**

**CHICKEN ROLL** 1-lb. **69¢**

**EASTERN SHORE - FRESH CUT**

**CHICKEN**

**QUARTERS**

BREASTS with wing or LEGS with back

Your Choice **35¢** lb.

**EARLY MORN**

**Sliced Bacon**

1-lb. pkg. **69¢**

**50 EXTRA BLUE Stamps**

with this coupon and purchase of 2-pkg. (of 2) NYLONGE

**Sponges**

GOOD THRU SAT., FEB. 1

**50 EXTRA BLUE Stamps**

with this coupon and purchase of 3-pkg. MARIOS SAUSAGE OR CHEESE PIZZA

**Cake Mixes**

GOOD THRU SAT., FEB. 1

**50 EXTRA BLUE Stamps**

with this coupon and purchase of 5-lb. bag GOLD MEDAL

**Flour**

GOOD THRU SAT., FEB. 1

**50 EXTRA BLUE Stamps**

with this coupon and purchase of 1-lb., 4-oz. pkg. CARNATION BREADED

**Fantail Shrimp**

GOOD THRU SAT., FEB. 1

**GRAND UNION**

**SUPERMARKETS**

**GRAND UNION**

**Liquid Bleach**

gal. **39¢**

**GRAND UNION**

**QUAKER OATS** 1-lb. 2-oz. **29¢**

**MINUTE RICE** 1-lb. 2-oz. **79¢**

**TOMATO JUICE** 3-lb. **97¢**

**GREEN GRANT**

**NIBLETS CORN** 4-lb. **89¢**

**8 LIVES**

**TUNA CAT FOOD** 2-lb. **59¢**

**GRAND UNION**

**SPAGHETTI**

1-lb. pkgs. **6'100**

**GRAND UNION**

**SPAGHETTINI** 6-lb. **1.00**

**INSTANT**

**Maxwell House Coffee**

10-oz. jar **1.43**

**50 EXTRA BLUE Stamps**

with this coupon and purchase of 1-lb., 4-oz. pkg. CARNATION BREADED

**Fantail Shrimp**

GOOD THRU SAT., FEB. 1

**50 EXTRA BLUE Stamps**

with this coupon and purchase of 13-oz. pkg. MARIOS SAUSAGE OR CHEESE PIZZA

**Cake Mixes**

GOOD THRU SAT., FEB. 1

**50 EXTRA BLUE Stamps**

with this coupon and purchase of 1/2-gallon GRAPEFRUIT OR ORANGE JUICE

**Orange Juice**

GOOD THRU SAT., FEB. 1

**50 EXTRA BLUE Stamps**

with this coupon and purchase of 1-lb., 4-oz. pkg. CARNATION BREADED

**Fantail Shrimp**

GOOD THRU SAT., FEB. 1

**SOLID WHITE**

**Bumble Bee Tuna**

3-oz. cans **1.00**

**REGULAR OR DRIP**

**Grand Union Coffee** 1-lb. can **49¢**

**DISINFECTANT**

**LYSOL SPRAY** 13-oz. can **99¢**

**ALL PURPOSE**

**MAZOLA OIL** 1-lb. **67¢**

**FLORINANT**

**SOFT MARGARINE** 1-lb. **47¢**

**INSTANT COFFEE**

**CHOC FULL 'O NUTS** 5-oz. **87¢**

**MR. CHIPS** 1-lb. **59¢**

**SALAD DRESSING** 4-oz. **55¢**

**NOTTS**

**APPLESAUCE** 4-oz. **89¢**

**FOR PANCAKES**

**LOG CABIN SYRUP** 1-lb. **58¢**

**GRAND UNION**

**FIG BARS** 2-lb. **39¢**

**GRAND UNION - SUGAR**

**HONEY GRAHAMS** 1-lb. **33¢**

**DOLE - SELECTED**

**PINEAPPLE** 2-lb. **41¢**

**TRAIKO AMERICAN**

**PEACHES** 3-lb. **51.00**

**SPAGHETTI'S** 2-lb. **33¢**

**GO DEL MONTE**

**SWEEPSTAKES**

**MIX OR MATCH**

**Peas or Corn**

1-lb. 1-oz. cans **5'100** WHOLE KERNEL OR CREAM STYLE

**DEL MONTE CUT BLUE LAKE**

**GREEN BEANS** 3-lb. **85¢**

**DEL MONTE**

**SARDINES** 1-lb. **37¢**

**DEL MONTE**

**STEWED TOMATOES** 2-lb. **57¢**

**DEL MONTE**

**DRIED PRUNES** 1-lb. **41¢**

**DEL MONTE**

**PINE ORANGE DRINK** 1-lb. **37¢**

**DEL MONTE**

**TROPICAL DRINK** 3-lb. **79¢**

**Del Monte Drinks**

1-lb. 14-oz. cans **79¢**

**DEL MONTE**

**Fruit Cocktail**

1-lb. 14-oz. can **39¢**

**Frozen Foods**

QUICK, CONVENIENT, EASY TO PREPARE

**ALL BUTTER**

**Sara Lee Pound Cake**

1-lb. **59¢**

**GRAND UNION**

**Waffles** 9¢

**ORE-IDA SHOESTRING**

**Potatoes** 3-lb. **1.00**

**GRAND UNION**

**RED RASPBERRIES** 10-oz. **33¢**

**STOUTER**

**CHICKEN & NOODLES** 11-oz. **69¢**

**STOUTER**

**SANDWICHES** 1-lb. **89¢**

**KRAFT DELICIOUS**

**AMERICAN SLICES** 12-oz. **49¢**

**GRAND UNION**

**CREAM CHEESE** 8-oz. **21¢**

**NEEDS EYE QUICK TALK**

**STRAWBERRIES** 10-oz. **27¢**

**HERB COOKIES** 11-oz. **48¢**

**SWANSON**

**TV DINNERS** 4-oz. **67¢**

**DETERGENT**

**GIANT TIDE**

**CHASE & SANBORN**

**Coffee**

1-lb. can **59¢**

**PILLSBURY'S**

**GORILLA MILK** 1-lb. **55¢**

**PETER PAN**

**PEANUT BUTTER** 12-oz. **45¢**

**BROTHER** 2-lb. **57¢**

**GRAND UNION**

**ALUMINUM FOIL** 2-lb. **47¢**

**GRAND UNION**

**PORK & BEANS**

1-lb. cans **1.00**

**HEFTY - GAL SIZE**

**PLASTIC BAGS** 15-lb. **45¢**

**SCOTT - PLASTIC**

**SANDWICH BAGS** 2-lb. **45¢**

**GRAND UNION**

**CORNEBEEF HASH** 1-lb. **59¢**

**8 LIVES**

**TUNA CAT FOOD** 6-oz. **95¢**

**FOR BAKING OR FRYING**

**Crisco Oil**

deal **1.89**

**COFFEE**

**MAXWELL HOUSE** 1-lb. **59¢**

**ALL PURPOSE**

**CRISCO** SHORTENING 3-lb. **77¢**

**THE BIG O'S CEREAL**

**CHEERIOS** 15-oz. **44¢**

**LONG GRAIN**

**CAROLINA RICE** 3-lb. **53¢**

**SAVE MORE ON**

**Health & Beauty Aids**

**EXTRA DRY**

**Arrid Deodorant**

5.8 oz. can **79¢**

**JOURNAL, DRY OR OILY**

**BRECK SHAMPOO** 4-oz. **49¢**

**BRUCE**

**CREME RINSE** 4-oz. **49¢**

**PERTUSSIS COUGH SYRUP**

**WILD BERRY** 4-oz. **49¢**

**KEKUL OF SUPER**

**MODESS** 2-lb. **75¢**

**PETALUMIN JELLY**

**VASELINE** 4-oz. **31¢**

**Engaged**

The engagement of Miss Diane Anita Fawcett of Manchester to Melvin Wayne Smith of Heding, Calif., has been announced by her parents, Mr. and Mrs. Herman J. Fawcett of 172 New Bolton Rd. Her fiancé is the son of Mr. and Mrs. Ballard C. Smith of Heding.

Miss Fawcett is a 1968 graduate of Manchester High School. She is employed as a bookkeeper with the South Windsor Equipment Co. Mr. Smith is a 1968 graduate of Central Valley (Calif.) High School. He is a second class petty officer aboard the USS George C. Marshall in Groton.

A date for the wedding has not been announced.

**CHASE & SANBORN**

**Coffee**

1-lb. can **59¢**

**BOY SCOUT**

**Notes and News**

Pack 91

Cub Scout Pack 91 of Green School met Jan. 20 at the school. The meeting began with Dr. Robert Smith and chairman Don Sisco singing "Daisy, Daisy" while the scouts and their parents accompanied them with calliope music. Don conducted the opening ceremony.

Advancement chairman John Garoppo presented awards to Richard Wilson, denner; Paul Smith, assistant denner; Alex Elmer and David Elmer, bob cut plus; Gary Thrasher, David Gwyn, Billy Talbot and Craig Golin, wolf badge; Billy Stevens, bear badge; and Eric Thomas, bear badge and gold arrow.

The cub scouts presented a "Fit for America" program. Den 4 led by Ricky Barnett started with a cheer. Den 8 put on a skit, "Don't Take on the Champs." Those who participated were Gregory Malloy, Jim McCallister, Bill Stevens, Dave Porter, Eric Thomas and Mark Garoppo.

Den 2 gave instruction physical fitness by doing push-ups, sit-ups, running, crab walking, weight lifting and finger strengthening. Those participating were Alex Elmer, David Elmer, Gary Thrasher, Bill Talbot, David Gwyn, Craig Hart and Peter Gaudreau.

Chairman Sisco announced that Mrs. Gerald Gaudreau and Mrs. Garrett Thrasher will replace Mrs. Lucille Butterworth as the den mother for Den 2. Mrs. Butterworth will act as advisor.

Den 2 and the Webelos sold candy. Proceeds will be dispersed between the two dens and the pack treasury.

Cubs are requested to wear their uniforms to church services on Sunday, Feb. 9. A Blue and Gold dinner will be held on Thursday, Feb. 20.

At the close of the meeting the colors were retired by Den 1.

**SHARIF AS VALENTINO**

**NEW YORK (AP)** - Omar Sharif has been signed by Mike Frankovich to star in a musical version of the life story of Rudolph Valentino, which Columbia Pictures will release.

**WANTED**

Clean, Late Model

**USED CARS**

Top Prices Paid For All Makes!

**CARTER CHEVROLET CO., INC.**

1229 Main St.

Phone 650-5258

**Never Before So Low Priced Full Feature - Full Feature**

**Sale**

**\$5.95**

**"Elastic" is the registered TM of The Hickey-Hey Patent Corp.**

**Weldon**

**DRUG COMPANY**

787 Main St. - 643-5351

**YOU JUST GET MORE AT GRAND UNION!**

PRICES EFFECTIVE THRU SAT., FEB. 1st. WE RESERVE THE RIGHT TO LIMIT QUANTITIES.

Manchester Parkade, Middle Turnpike, West-Triple-S Redemption Center 180 Market Square, Newington

Open Friday Nights to 9--All Redemption Centers Closed Mondays

**HERE'S PROOF... YOU DON'T PAY MORE...**

PRICES EFFECTIVE THRU SAT., FEB. 1st. WE RESERVE THE RIGHT TO LIMIT QUANTITIES.

Manchester Parkade, Middle Turnpike, West-Triple-S Redemption Center 180 Market Square, Newington

Open Friday Nights to 9--All Redemption Centers Closed Mondays

**50 EXTRA BLUE Stamps**

with this coupon and purchase of 1-lb., 4-oz. pkg. CARNATION BREADED

**Fantail Shrimp**

GOOD THRU SAT., FEB. 1

**50 EXTRA BLUE Stamps**

with this coupon and purchase of 13-oz. pkg. MARIOS SAUSAGE OR CHEESE PIZZA

**Cake Mixes**

GOOD THRU SAT., FEB. 1

**50 EXTRA BLUE Stamps**

with this coupon and purchase of 1/2-gallon GRAPEFRUIT OR ORANGE JUICE

**Orange Juice**

GOOD THRU SAT., FEB. 1

**50 EXTRA BLUE Stamps**

with this coupon and purchase of 1-lb., 4-oz. pkg. CARNATION BREADED

**Fantail Shrimp**

GOOD THRU SAT., FEB. 1

**50 EXTRA BLUE Stamps**

with this coupon and purchase of 1-lb., 4-oz. pkg. CARNATION BREADED

**Fantail Shrimp**

GOOD THRU SAT., FEB. 1

Now at all Popular Markets



Here's a BIG BONUS for you...

300 EXTRA Top Value Stamps



the stamps that give you MORE\*

CLIP AND SAVE!

This coupon good for 100 Extra Top Value Stamps with purchase of \$5 or more through Saturday, Feb. 1, 1969

Worth 100 EXTRA Top Value Stamps. This coupon worth 100 Extra Top Value Stamps with purchase of \$5 or more at any Popular Mkt. Not good on purchases of cigarettes or beer - State Law. Coupon good through Saturday, February 1, 1969.

CLIP AND SAVE!

This coupon good for 200 Extra Top Value Stamps with purchase of \$7.50 or more from Mon. Feb. 3 through Sat., Feb. 8, 1969

Worth 200 EXTRA Top Value Stamps. This coupon worth 200 Extra Top Value Stamps with purchase of \$7.50 or more at any Popular Mkt. Not good on purchases of cigarettes or beer - State Law. Coupon good Monday, February 3, thru Sat., Feb. 8, 1969.

COUPONS GOOD ONLY FOR STATED DATES

\*MORE GIFTS



Top Value offers you more gifts! Over 3,000 in the big, 184-page Top Value Stamps Gift Catalog.

\*MORE FAMOUS BRANDS



From Anso to Zenith... Top Value offers more famous brands than any other stamp plan.

\*EXCLUSIVE 2-WAY GOLDEN GUARANTEE



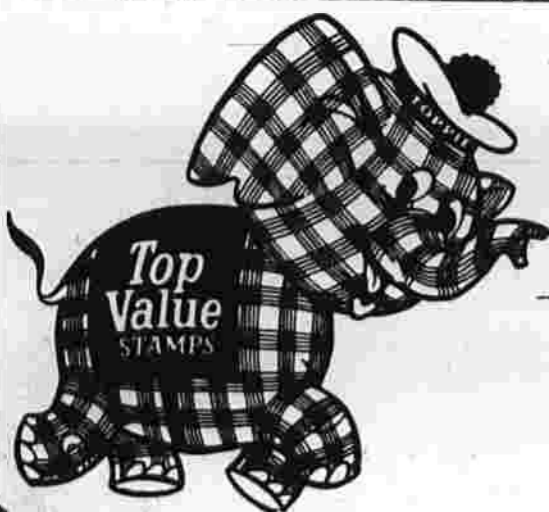
Only Top Value Stamps guarantees every gift 2 ways: 1. You can't get better gifts for fewer stamps... anywhere. 2. You must be satisfied... 100%.

\*FINEST REDEMPTION CENTERS



Conveniently located to serve you at

CONNECTICUT: West Hartford 1469 New Britain Ave. Corbin's Corner. Manchester 1145 Tolland Turnpike Burr Shopping Plaza. Hamden 2300 Dixwell Ave. Hamden Mart. MASSACHUSETTS: Springfield 1369 Liberty Street Springfield Shopping Plaza. Holyoke 262 Westfield Road Next to Popular.



...and your dollar's worth more when you shop at the store that gives TOP VALUE STAMPS



© 1969, TOP VALUE ENTERPRISES INC.

YOU CAN WIN TOO! Play Popular's new and exciting fun cash game QUIK CASH

Join the fun-win up to \$1,000 in cash plus thousands of Top Value Stamps.

MANCHESTER 725 MIDDLE TURNPIKE, EAST

MANCHESTER BURR CORNERS SHOPPING PLAZA TOLLAND TURNPIKE-NEXT TO CALDOR

SOUTH WINDSOR SULLIVAN AVENUE SHOPPING CENTER



WEST VIRGINIA HAMS 89¢ lb. Semi - Boneless Skinless-Shankless-Sugar Cured

Freshly Sliced Beef Liver 29¢ lb. Armour Star Sliced Bacon 79¢ lb. By The Piece Pastromi 89¢ lb. Sliced Capital Farms Kielbasa 89¢ lb. Mucko's Bologna Minc'd or Long Popular 79¢ lb. Oscar Mayer Frankfurts Skinless 59¢ lb. Oscar Mayer Link Sausage 79¢ lb. Oscar Mayer Ham Slices 8 oz. pkg. 99¢

Select Choice Brisket Head Cut Corned Beef 59¢ lb. First Cuts --- 89¢ lb.

Choice U.S.D.A. Boneless Chuck Roast 79¢ pound Famous Popular Quality

FROZEN FOOD SPECIALS Banquet Pies Chicken Beef or Turkey 5 8 oz. pkgs. 99¢ Bird's Eye Onion Rings 5 4 oz. pkgs. 99¢ Taste O' Sea Fish Sticks 3 8 oz. pkgs. \$1 Vahlsing Shoe String Potatoes 1 1/2 pd. 29¢

Kraft Natural Swiss Cheese 1/2 lb. 49¢ Blue Bonnet Soft Margarine 1 lb. 39¢ Cooked Flounder 1 lb. 69¢ Sealtest Cottage Cheese 1 lb. 31¢

Libby Tomato Juice 4 quart bottles \$1 Viva Spaghetti 5 1 lb. boxes \$1 Viva Spaghetti Sauces 3 pint jars \$1 Vicks Vaporub Save 30¢ on 3 1/2 oz. jar 79¢ Scope Oral Antiseptic 17 ounce bottle 99¢ Applesauce Sellin's Fancy 3 1 lb. jars \$1 Wesson Oil 38 ounce bottle 69¢

POPULAR MARKETS GOLD MEDAL FLOUR With This Coupon 5 lb. bag 39¢ Coupon good through Sat. Feb. 1, 1969

POPULAR MARKETS KLEENEX PAPER TOWELS Two 2 pak pkgs. with this coupon 4 indiv. rolls \$1 Coupon good through Sat. Feb. 1, 1969

MIRACLE WHIP Salad Dressing Quart Jar 48¢

DASH Giant 50 oz. Box Laundry Detergent 58¢

Mahaco Ore Creams 1 lb. bag or box 45¢ Tip Top Cracked Wheat Bread 1 lb. 29¢ Ken's Salad Dressings 8 oz. 3 for \$1

8 Lives Tuna Cat Food 97¢ 8 Lives Cat Food Super Supper Tuna and egg 8 oz. \$1 Chiffon Dish Detergent 22 oz. bottle 39¢ Tang 27 oz. jar \$1.29 Staley Spray Starch 22 oz. spray can 39¢

100 Extra Top Value Stamps With purchase of pkg. of 24 regular or super

Kotex Feminine Napkins

Dinty Moore Beef Stew 24 oz. can 49¢ Libby Corned Beef Hash 15 1/2 oz. can 39¢ Kal Kan Far Days and Cafe Chunk Beef & Burgers/Chicken or Steak 5 14 oz. cans \$1

Dow Oven Cleaner 16 oz. spray can 79¢ Dow Bathroom Cleaner 17 oz. spray can 49¢ Lestoil Pine Detergent half gallon 89¢

FLORIDA FRESH ESCAROLE OR CHICORY 2 1/2 39¢ Cucumbers Extra Fancy 2 for 29¢ Cherry Tomatoes Perfect For Salads pt. bkt. 39¢ Cabbage Crisp, Fresh lb. 12¢ FIRST OF THE SEASON Asparagus Flown In By Jet lb. 59¢

CALIFORNIA NAVEL ORANGES 10 for 59¢

50 EXTRA TOP VALUE STAMPS WITH PURCHASE OF 10 lbs. OF MAINE POTATOES

Double Top Value Stamps every Wednesday

TOP QUIK CASH WINNERS

\$1000 WINNERS

MRS. JOHN W. ZUKEL 90 Todd St. Hamden. THOMAS JANOWIEG 89 High Tower Drive South Windsor. MRS. THEODORE SWANSON 1071 High Rd. Kensington

\$100 WINNERS

MRS. STANLEY BERNSTEIN- 8 Butternut Drive, Bloomfield. MRS. MARY AUSTIN- 65 Wintonbury Ave., Bloomfield. MRS. GEO. TOWNSEND- 61 Pioneer Drive, West Hartford. ANITA AUBIN-188 Allen Place, Hartford. MRS. ALDO SCULLO-84 Natick St., Hartford. VIRGINIA GROEBEL-8 Aroda Drive, Wapping. ALICE CAVANNA- 2008 New London Turnpike, Glastonbury. RITA MCGUIRE- 88 Pleasant Hill Drive, West Hartford

Thousands in cash prizes



IN OUR NEW FUN GAME



IT'S EASY TO WIN... IT'S ABSOLUTELY FREE! HOW TO WIN: Check GOLD SPOT in last 2, 3, or 4 digits... AT ALL Popular Markets

Get Guaranteed Eat in the Meat—Choose "Super-Right"!

"Super-Right"—NO FAT ADDED! TOP OR BOTTOM ROUND OR CROSS RIB ROAST

BEEF ROAST SALE! 99¢ lb.



Ground Beef 55¢ lb. "Super-Right" Freshly Ground Any Size Package

Young Turkeys 45¢ lb. "Super-Right" U.S.D.A. Inspected GRADE A

Chuck Steaks 49¢ lb. "Super-Right" Quality Beef—Bone In

TASTY COMBINATION! SLICED BEEF LIVER 39¢ lb. "Super-Right" Quality

OVEN READY—Whole or Either Half Legs of Lamb 73¢. Shoulder Lamb Chops 69¢, Rib Lamb Chops 79¢, Loin Lamb Chops 99¢

Fresh Brisket 79¢ lb. Boneless Beef Front Cuts

Iceberg Lettuce 39¢. Temple Oranges 10 for 69¢. Yellow Onions 3 lb. 29¢. Red Delicious Apples 29¢.

Pork Chops 89¢. Sausage Meat 39¢. Franks 59¢. Sandwich Meats 59¢. Turkey Legs 28¢. Liverwurst 49¢.

Temple Oranges 10 for 69¢. Yellow Onions 3 lb. 29¢. Red Delicious Apples 29¢. SKIPPY Peanut Butter 38¢.

Instant Coffee 99¢. Tuna Fish 39¢. Viva Napkins 1.00. Sugar Wafers 1.00. Margarine 30¢. Maxwell House Coffee 69¢. Hellmann's Mayonnaise 65¢. Clam Chowder 35¢.

Comet Cleanser 31¢. Marshmallow Fluff 47¢. Cheerios 36¢. Bold Laundry Detergent 78¢.

Layer Cake Mix 1.00. Kleenex Products. Blueberry Pie 59¢. Wheat Bread 55¢. Dairy Values! Fresh Butter 76¢. Meat Dinners 1.00.

FRANCO-AMERICAN Cooked Spaghetti 31¢. Clorox Bleach 52¢. Joy Liquid Detergent 62¢. Crisco Oil 48¢. Kellogg's Corn Flakes 38¢.

Blueberry Pie 59¢. Wheat Bread 55¢. Dairy Values! Fresh Butter 76¢. Meat Dinners 1.00. Sweet Peas 49¢. Meat Pies 99¢. Orange Juice 99¢.

BEECH-NUT Baby Foods 65¢. Biscuits 29¢. Cottage Cheese 41¢. Cracker Barrel Cheese 69¢. Wisconsin Sharp Cheddar Cheese 99¢. Cream Cheese 27¢. Fresh-Chilled Orange Juice 75¢. Mel-O-Bit White-Swiss-Pimento Cheese Slices 59¢.

Marvel Ice Cream 69¢. Sunnysfield Waffles 49¢. Hershey Baking Chocolate 37¢. Nutley Margarine 17¢. Nestle's Quik 77¢. Kellogg's All Bran 38¢.

Prices effective through Saturday, Feb. 1st in Southington store only

Nixon's Press Conference Rated Better Than Average Stamps

Editor's Note: AP Political Writer Jack Bell has covered presidential affairs for the past quarter-century. In the following story Bell gives his impressions of opening presidential news conferences from John F. Kennedy and not as President Nixon's nationally televised and broadcast session with reporters on Monday.

By JACK BELL AP Political Writer WASHINGTON (AP) — When President Nixon's first news conference since entering the White House was over, one participant was overheard to say of Monday's 20-minute session: "When you've seen one presidential press conference, you've seen them all."

Not exactly true, of course. The Nixon audience was bigger than Kennedy's at the new State Department Auditorium on Jan. 28, 1969. Upward of 200 crowded into Truman's office for his first.

The technical arrangements were different, the faces in the crowd had changed, but somehow the burdens of the presidency seemed the same there across the span of more than eight years. Eisenhower had a turnout of 294 at his initial Feb. 17, 1953 session.

It dispensed with the open-employment opening statement which in the case of Dwight D. Eisenhower ran for a solid 21 minutes.

There was none of the blustering of Truman or of the coffee chat atmosphere of Johnson's unscripted first news meeting Dec. 7, 1963 with 25 White House regulars around his desk.

There was no attempt to match the Kennedy wit. There was clear avoidance of Eisenhower's tortured syntax.

For one who has seen five presidents steel their nerves against the presumed dragon of TV's Coy Bob, Walter Johnson, Nixon gets better than an average grade.

Despite a tell-tale line of white tension across his upper lip and a bit of nervous throat clearing, the new Republican president handled himself easily and confidently.

\*Helen of Glasier's Says: Make a resolution to have a better figure for life. If your girde isn't a perfect fit, it can't possibly be an asset to your figure. Isn't it worth 5 minutes of your time to prove to yourself the beautiful difference a professional fit makes? Stop by today. All fittings and alterations are free of charge.

Glasier's CORSET & UNIFORM SHOP 831 MAIN ST./MANCHESTER, CONN. TELEPHONE 643-6346

Shop Along With The Inquirer

At Ease Spring is here. Bring it into your kitchen. LEFT THE LATCHES OIL SHOP, 977 Main St., has framed gourmet prints in luscious colors, to add to the galley of your kitchen. Fruits and vegetables with gourmet recipes are included in the picture.

Many Choices For that special Valentine for friend and for try either FAIRWAY, East Center St. or MAIN St. Their selection is the most complete in the area.

Light Up Your Life! Choose from Contemporary, Colonial, or Traditional styles. There's a really "Trendy" Sale in on. There's a beauty with polished bronze turned columns.

Today in History By the Associated Press Today is Wednesday, Jan. 29, the 29th day of 1969. There are 316 days left in the year.

Personalized Floors Replace Outdated Plastic Tile Install New Life-time Ceramic Complete Job In One Day

Weep no more, my lady... Don't despair — there really is a store where you can count on service and personal attention to your shopping needs.

VALUABLE COUPON This Coupon Worth 10¢ Towards The Purchase of 5-lb. bag GOLD MEDAL FLOUR With Coupon You Pay Only 49¢

VALUABLE COUPON This Coupon Worth 20¢ Towards The Purchase of ONE BOX OF 24 KOTEX With Coupon You Pay Only 63¢

MIDWINTER SALE OF DRESSES — TAILORED OR DRESSY Values from \$20.00 to \$49.00 NOW \$14.00 to \$29.00

Kaye's SPORTSWEAR OF VERNON "HOME OF BEAUTIFUL CLOTHES"

Especially For Baby



Light Up Your Life! Choose from Contemporary, Colonial, or Traditional styles. There's a really "Trendy" Sale in on.

Today in History By the Associated Press Today is Wednesday, Jan. 29, the 29th day of 1969.

Personalized Floors Replace Outdated Plastic Tile Install New Life-time Ceramic

Weep no more, my lady... Don't despair — there really is a store where you can count on service and personal attention to your shopping needs.

VALUABLE COUPON This Coupon Worth 10¢ Towards The Purchase of 5-lb. bag GOLD MEDAL FLOUR

VALUABLE COUPON This Coupon Worth 20¢ Towards The Purchase of ONE BOX OF 24 KOTEX

MIDWINTER SALE OF DRESSES — TAILORED OR DRESSY Values from \$20.00 to \$49.00

Kaye's SPORTSWEAR OF VERNON

Glasier's CORSET & UNIFORM SHOP





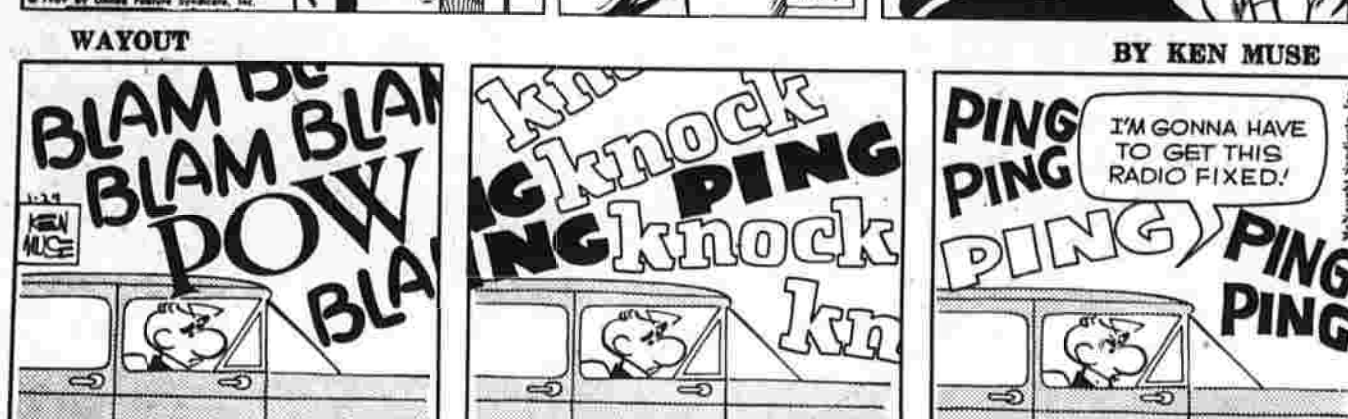
BUGGS BUNNY



ALLEY OOP



DAVY JONES



WAYOUT



BUZZ SAWYER



MICKY FINN



MR. ABERNATHY



PRISCILLA'S POP



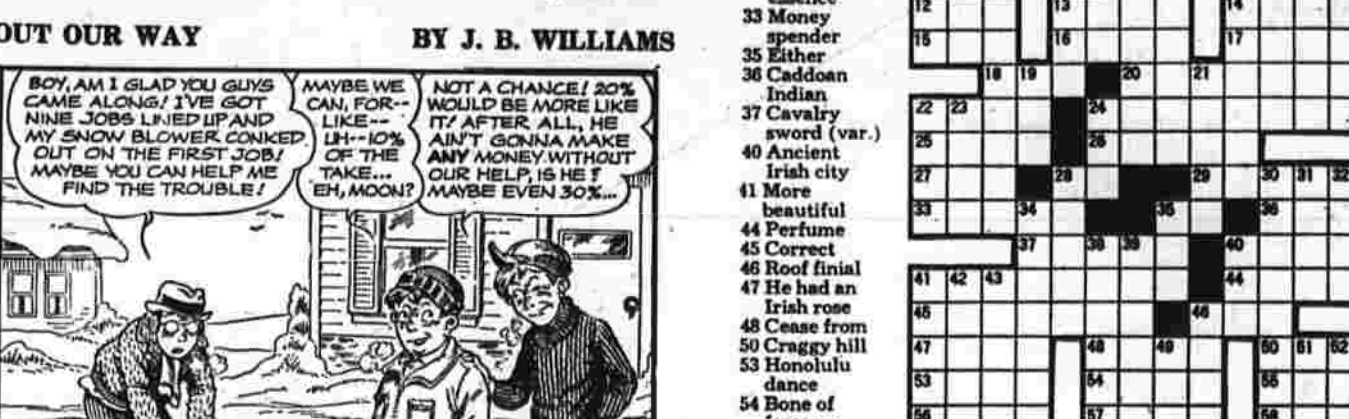
ROBIN MALONE



LITTLE SPORTS



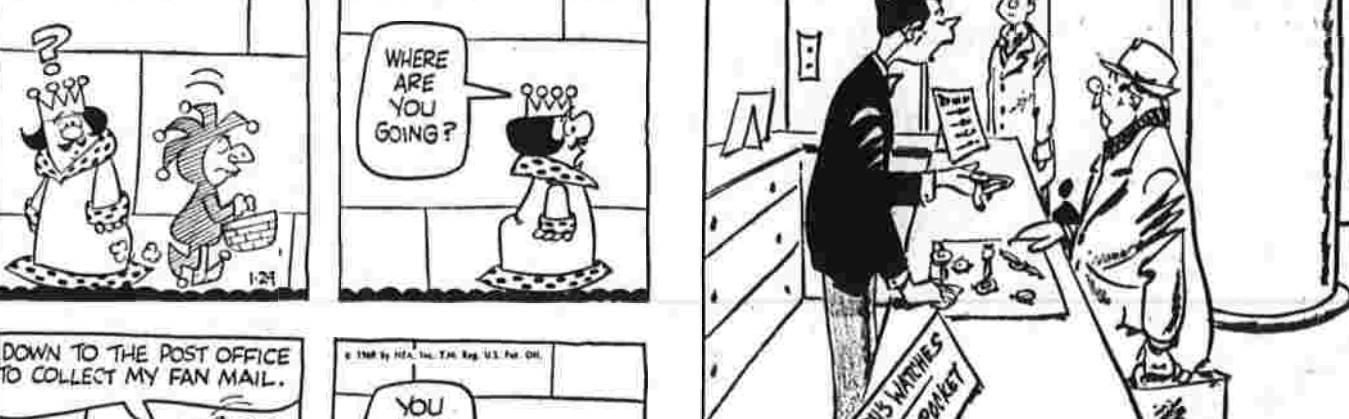
OUR BOARDING HOUSE with MAJOR HOOPFE



OUT OUR WAY



SHORT RIBS



STEVE CANYON



WINTHROP



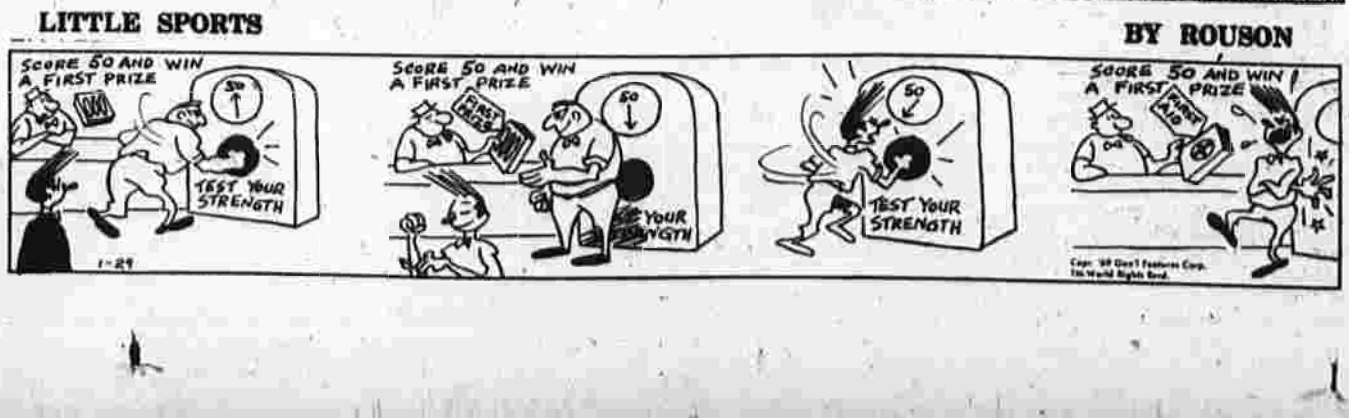
CAPTAIN EASY



WINTHROP



CAPTAIN EASY



LITTLE SPORTS



LITTLE SPORTS

CLASSIFIED ADVERTISING. Classified Advertising Dept. Hours 8 A.M. to 4:30 P.M. COPY CLOSING TIME FOR CLASSIFIED ADVT. 4:30 P.M. DAY BEFORE PUBLICATION.

Trouble Reaching Our Advertiser? 24-Hour Answering Service Free to Herald Readers. Want information on one of our classified advertisements? No answer at the telephone? Please call...

HERALD BOX LETTERS. For Your Information. The Herald will not disclose the identity of any advertiser using box letters.

Automobiles For Sale. REPOSESSION - Pontiac Catalina convertible 1966, automatic, power steering, power brakes, powder blue, beautiful car. No money down. Broker, 233-8715.

Lost and Found. LOST - 8 1/2 month old large female, part Collie, part Irish Setter. White with reddish brown markings and Bolton dog tag. Reward. Vicinity South Street, Brewster Street. Contact: 742-9871, 742-9882.

Personals. INCOME TAX service, call Dan Mosler, 649-3239, or 525-8263. INCOME TAXES prepared by Marvin Baker, 643-0267.

Business Services. CARPENTER - experienced, all types of work. Reasonable rates. Call anytime, 646-1737. TREE removal-trimming. Reasonable rates. Covered for property damage. Got a tree problem? Call Dan's Tree Service, 522-8423.

Business Services. CARPENTER - experienced, all types of work. Reasonable rates. Call anytime, 646-1737. TREE removal-trimming. Reasonable rates. Covered for property damage. Got a tree problem? Call Dan's Tree Service, 522-8423.

Help Wanted-Male 36. CAREER-MINDED individual wanted for management position for growing Hartford based fast food service organization. 21 or over, capable of assuming responsibilities. A permanent position with fringe benefits. Experience not necessary. We will train. Successful applicant must have ambition, energy and enthusiasm. Apply in own handwriting, P.O. Box 2298, Biasons Corner Branch, West Hartford, Conn. 06117. An equal opportunity employer.

Help Wanted-Male 36. MECHANICS. SHEET METAL, MACHINE ASSEMBLERS. Must be able to read blueprints. First class experience in fully air-conditioned plant, work wages and fringe benefits liberal overtime schedule. Apply at 121 Adams St., Manchester 647-9955.

Help Wanted-Male 36. ACCOUNTS Payable Clerk - 11-17, full-time or part-time. In person or by mail. Credit Rating Bureau of Manchester, 983 Main St., Manchester, 643-1939.

Help Wanted-Male 36. OPERATORS. Openings for experienced computer operators to work 8:30-4:30, 5 days a week. Must be able to work all phases of computer operation. Free parking, subsidized cafeteria, congenial co-workers, excellent working conditions. Apply FIRST NATIONAL STORES, Inc. Park and Oakland Aves., East Hartford.

Help Wanted-Male 36. JANITOR, part-time evenings, Manchester area. Call 645-4450, 3-8 p.m. only. TV & RADIO SERVICEMAN. For local RCA distributor. Will train for future promotion. Ideal working conditions, five day week, vacation, excellent benefits. Call Mr. M. Nimrowski, 928-6581.

Help Wanted-Male 36. EASTCO. 95 LEGGETT ST. EAST HARTFORD. An Equal Opportunity Employer. CABINET maker with supervisory experience. Call Mr. M. Nimrowski, 928-6581.

Help Wanted-Male 36. AVON CALLING! Represent Avon's leading cosmetic company in your neighborhood. You can earn while you learn! Call 288-9922 for an interview in your home.

Help Wanted-Male 36. AVON CALLING! Represent Avon's leading cosmetic company in your neighborhood. You can earn while you learn! Call 288-9922 for an interview in your home.

Help Wanted-Male 36. FULL-TIME supervisor for cleaning contractor in Hartford for growing Hartford based fast food service organization. 21 or over, capable of assuming responsibilities. A permanent position with fringe benefits. Experience not necessary. We will train. Successful applicant must have ambition, energy and enthusiasm. Apply in own handwriting, P.O. Box 2298, Biasons Corner Branch, West Hartford, Conn. 06117. An equal opportunity employer.

Help Wanted-Male 36. PARAGON GRINDING CORP. Has immediate openings for Blatnik Grinder operator (must be first class machinist able to hold close tolerance). Excellent working conditions in fully air-conditioned plant, work wages and fringe benefits liberal overtime schedule. Apply at 121 Adams St., Manchester 647-9955.

Help Wanted-Male 36. MOLD MAKERS. TOOL MAKERS. Interviews Monday to Friday, 7 a.m. to 5 p.m., Saturday by appointment. 643-4257, 875-7927.

Help Wanted-Male 36. VERNON MOLD & TOOL, INC. 915 Hartford Pk., Rockville. Top rates, overtime, all benefits. Long range programs. MANCHESTER TOOL & DESIGN INC. 130 Hartford Road, 645-5283.

Help Wanted-Male 36. EXPERIENCED TOOLMAKER. MOLD MAKING AND REPAIR. Benefits, Growth Potential. Apply: IONA MANUFACTURING CO. Regent Street, Manchester.

Help Wanted-Male 36. IMMEDIATE Opening For EXPERIENCED TYPIST. To Operate A Friden Machine. You will find your co-workers most congenial. The fringe benefits are too numerous to mention here. Come in soon and we'll discuss the position. Manchester Evening Herald, 18 BISSELL ST. - MANCHESTER, CONN.

Help Wanted-Male 36. EXPERIENCED... LINOTYPE OPERATOR. Immediate Opening. Apply in person at the Manchester Evening Herald, 18 BISSELL STREET - MANCHESTER, CONN.

Help Wanted-Male 36. EXPERIENCED... LINOTYPE OPERATOR. Immediate Opening. Apply in person at the Manchester Evening Herald, 18 BISSELL STREET - MANCHESTER, CONN.

# CLASSIFIED ADVERTISING

CLASSIFIED ADVERTISING DEPT. HOURS  
8 A.M. to 4:30 P.M.  
CLOSING TIME FOR CLASSIFIED ADVT.  
1:30 P.M. DAY BEFORE PUBLICATION.  
Deadline for Saturday and Monday is 4:30 p.m. Friday.

YOUR COOPERATION WILL BE APPRECIATED  
DIAL 643-2771

Continued From Preceding Page

Help Wanted—Male 36 He'p Wanted—Male 36

AUDITOR—1968-69, regional school district, No. 8, Board of Education, Hebron, Conn. For details call Aram Damarjian, Superintendent of Schools, 1-239-9186.

FIRST AND SECOND SHIFTS

Multi Circuits—A rapidly growing firm in the electronic field extends an opportunity to visit our plant to discuss training opportunities in the following areas:

SILK SCREENING  
DRILLING  
FABRICATING  
PLATING

Apply between 9 a.m. and 6 p.m. Ask for Mr. George Smith.

MULTI-CIRCUITS  
60 HARRISON STREET  
MANCHESTER

ENERGETIC man wanted to work in large hardware store, full-time. Some experience helpful but not necessary. Must be neat and clean. Ambition and perseverance rate high. Excellent future advancement. Many benefits. Call Mr. George Smith, 60 Harrison Street, Monday through Friday at W.G. Gleesley Co., 338 N. Main St., Manchester.

WINDOW CLEANER  
Experienced, part-time or full-time. Good pay. All fringe benefits. Must be reliable. Call 649-5334.

STORE MANAGER  
TRAININGS  
Openings available in your local area for individuals to join one of the fastest growing retail food chains in the East.

Excellent paid training program. Good starting salary, with commissions and semi-monthly bonuses. Company benefits include paid Blue Cross, Blue Shield, Major Medical, Life Insurance and Company paid profit sharing Retirement Plan. Send resume of qualifications to Box "J", Manchester Herald.

NO experience necessary.

Excellent paid training program. Good starting salary, with commissions and semi-monthly bonuses. Company benefits include paid Blue Cross, Blue Shield, Major Medical, Life Insurance and Company paid profit sharing Retirement Plan. Send resume of qualifications to Box "J", Manchester Herald.

SALES MANAGER  
TRAININGS  
Openings available in your local area for individuals to join one of the fastest growing retail food chains in the East.

NO experience necessary.

Excellent paid training program. Good starting salary, with commissions and semi-monthly bonuses. Company benefits include paid Blue Cross, Blue Shield, Major Medical, Life Insurance and Company paid profit sharing Retirement Plan. Send resume of qualifications to Box "J", Manchester Herald.

NO experience necessary.

Excellent paid training program. Good starting salary, with commissions and semi-monthly bonuses. Company benefits include paid Blue Cross, Blue Shield, Major Medical, Life Insurance and Company paid profit sharing Retirement Plan. Send resume of qualifications to Box "J", Manchester Herald.

NO experience necessary.

Excellent paid training program. Good starting salary, with commissions and semi-monthly bonuses. Company benefits include paid Blue Cross, Blue Shield, Major Medical, Life Insurance and Company paid profit sharing Retirement Plan. Send resume of qualifications to Box "J", Manchester Herald.

NO experience necessary.

Excellent paid training program. Good starting salary, with commissions and semi-monthly bonuses. Company benefits include paid Blue Cross, Blue Shield, Major Medical, Life Insurance and Company paid profit sharing Retirement Plan. Send resume of qualifications to Box "J", Manchester Herald.

NO experience necessary.

Excellent paid training program. Good starting salary, with commissions and semi-monthly bonuses. Company benefits include paid Blue Cross, Blue Shield, Major Medical, Life Insurance and Company paid profit sharing Retirement Plan. Send resume of qualifications to Box "J", Manchester Herald.

NO experience necessary.

Excellent paid training program. Good starting salary, with commissions and semi-monthly bonuses. Company benefits include paid Blue Cross, Blue Shield, Major Medical, Life Insurance and Company paid profit sharing Retirement Plan. Send resume of qualifications to Box "J", Manchester Herald.

NO experience necessary.

Excellent paid training program. Good starting salary, with commissions and semi-monthly bonuses. Company benefits include paid Blue Cross, Blue Shield, Major Medical, Life Insurance and Company paid profit sharing Retirement Plan. Send resume of qualifications to Box "J", Manchester Herald.

## Help Wanted—Male or Female 37

PUNCH PRESS operator, part or full-time. Apply in person, Gayle Mfg. Co., Inc., 1088 - C Tolland Street, East Hartford, Conn.

PART-TIME bookkeeping type work beginning February 1st, for several months. Hours and salary flexible. Good pay. P. O. Box 1881, Hartford, Conn.

YOUR COOPERATION WILL BE APPRECIATED  
DIAL 643-2771

Continued From Preceding Page

Help Wanted—Male 36 He'p Wanted—Male 36

AUDITOR—1968-69, regional school district, No. 8, Board of Education, Hebron, Conn. For details call Aram Damarjian, Superintendent of Schools, 1-239-9186.

FIRST AND SECOND SHIFTS

Multi Circuits—A rapidly growing firm in the electronic field extends an opportunity to visit our plant to discuss training opportunities in the following areas:

SILK SCREENING  
DRILLING  
FABRICATING  
PLATING

Apply between 9 a.m. and 6 p.m. Ask for Mr. George Smith.

MULTI-CIRCUITS  
60 HARRISON STREET  
MANCHESTER

ENERGETIC man wanted to work in large hardware store, full-time. Some experience helpful but not necessary. Must be neat and clean. Ambition and perseverance rate high. Excellent future advancement. Many benefits. Call Mr. George Smith, 60 Harrison Street, Monday through Friday at W.G. Gleesley Co., 338 N. Main St., Manchester.

WINDOW CLEANER  
Experienced, part-time or full-time. Good pay. All fringe benefits. Must be reliable. Call 649-5334.

STORE MANAGER  
TRAININGS  
Openings available in your local area for individuals to join one of the fastest growing retail food chains in the East.

NO experience necessary.

Excellent paid training program. Good starting salary, with commissions and semi-monthly bonuses. Company benefits include paid Blue Cross, Blue Shield, Major Medical, Life Insurance and Company paid profit sharing Retirement Plan. Send resume of qualifications to Box "J", Manchester Herald.

NO experience necessary.

Excellent paid training program. Good starting salary, with commissions and semi-monthly bonuses. Company benefits include paid Blue Cross, Blue Shield, Major Medical, Life Insurance and Company paid profit sharing Retirement Plan. Send resume of qualifications to Box "J", Manchester Herald.

NO experience necessary.

Excellent paid training program. Good starting salary, with commissions and semi-monthly bonuses. Company benefits include paid Blue Cross, Blue Shield, Major Medical, Life Insurance and Company paid profit sharing Retirement Plan. Send resume of qualifications to Box "J", Manchester Herald.

NO experience necessary.

Excellent paid training program. Good starting salary, with commissions and semi-monthly bonuses. Company benefits include paid Blue Cross, Blue Shield, Major Medical, Life Insurance and Company paid profit sharing Retirement Plan. Send resume of qualifications to Box "J", Manchester Herald.

NO experience necessary.

Excellent paid training program. Good starting salary, with commissions and semi-monthly bonuses. Company benefits include paid Blue Cross, Blue Shield, Major Medical, Life Insurance and Company paid profit sharing Retirement Plan. Send resume of qualifications to Box "J", Manchester Herald.

NO experience necessary.

Excellent paid training program. Good starting salary, with commissions and semi-monthly bonuses. Company benefits include paid Blue Cross, Blue Shield, Major Medical, Life Insurance and Company paid profit sharing Retirement Plan. Send resume of qualifications to Box "J", Manchester Herald.

NO experience necessary.

Excellent paid training program. Good starting salary, with commissions and semi-monthly bonuses. Company benefits include paid Blue Cross, Blue Shield, Major Medical, Life Insurance and Company paid profit sharing Retirement Plan. Send resume of qualifications to Box "J", Manchester Herald.

NO experience necessary.

Excellent paid training program. Good starting salary, with commissions and semi-monthly bonuses. Company benefits include paid Blue Cross, Blue Shield, Major Medical, Life Insurance and Company paid profit sharing Retirement Plan. Send resume of qualifications to Box "J", Manchester Herald.

NO experience necessary.

Excellent paid training program. Good starting salary, with commissions and semi-monthly bonuses. Company benefits include paid Blue Cross, Blue Shield, Major Medical, Life Insurance and Company paid profit sharing Retirement Plan. Send resume of qualifications to Box "J", Manchester Herald.

## BERRY'S WORLD



"From now on, Pat—would you please call me Mr. President?"

Boats and Accessories 46

14' FIBERGLASS boat 40 h.p. motor, electric start. Complete rig. Call 649-5334.

WANTED—Restaurant equipment, used. Call 649-5334.

RELIABLE person needed part-time to care for live animal department at Lata Junior Museum. No previous experience necessary but must like animals. Hours 9 a.m. to 12 p.m. and 2 p.m. to 5 p.m. Tuesday through Saturday in Vernon Circle Shopping Center, which is adjacent to Exit 10 of the Wilbur Cross Parkway (Interstate 84) and at the hub of the highway network for one of New England's fastest growing areas. We are the exclusive sales agents for 7 successful new planning several more to open in the near future. The Vernon Circle Shopping Center is also growing rapidly and enables us to market the exciting homes of our new buyers. We will be opening a branch office at the Manchester Shopping Center, near the University of Connecticut, during February, and have tentative plans for several other branch office openings during 1969.

Wanted—To Buy 58

LOOKING for used furniture, call 649-5334.

WANTED—Restaurant equipment, used. Call 649-5334.

RELIABLE person needed part-time to care for live animal department at Lata Junior Museum. No previous experience necessary but must like animals. Hours 9 a.m. to 12 p.m. and 2 p.m. to 5 p.m. Tuesday through Saturday in Vernon Circle Shopping Center, which is adjacent to Exit 10 of the Wilbur Cross Parkway (Interstate 84) and at the hub of the highway network for one of New England's fastest growing areas. We are the exclusive sales agents for 7 successful new planning several more to open in the near future. The Vernon Circle Shopping Center is also growing rapidly and enables us to market the exciting homes of our new buyers. We will be opening a branch office at the Manchester Shopping Center, near the University of Connecticut, during February, and have tentative plans for several other branch office openings during 1969.

Wanted—To Buy 58

LOOKING for used furniture, call 649-5334.

WANTED—Restaurant equipment, used. Call 649-5334.

RELIABLE person needed part-time to care for live animal department at Lata Junior Museum. No previous experience necessary but must like animals. Hours 9 a.m. to 12 p.m. and 2 p.m. to 5 p.m. Tuesday through Saturday in Vernon Circle Shopping Center, which is adjacent to Exit 10 of the Wilbur Cross Parkway (Interstate 84) and at the hub of the highway network for one of New England's fastest growing areas. We are the exclusive sales agents for 7 successful new planning several more to open in the near future. The Vernon Circle Shopping Center is also growing rapidly and enables us to market the exciting homes of our new buyers. We will be opening a branch office at the Manchester Shopping Center, near the University of Connecticut, during February, and have tentative plans for several other branch office openings during 1969.

Wanted—To Buy 58

LOOKING for used furniture, call 649-5334.

WANTED—Restaurant equipment, used. Call 649-5334.

RELIABLE person needed part-time to care for live animal department at Lata Junior Museum. No previous experience necessary but must like animals. Hours 9 a.m. to 12 p.m. and 2 p.m. to 5 p.m. Tuesday through Saturday in Vernon Circle Shopping Center, which is adjacent to Exit 10 of the Wilbur Cross Parkway (Interstate 84) and at the hub of the highway network for one of New England's fastest growing areas. We are the exclusive sales agents for 7 successful new planning several more to open in the near future. The Vernon Circle Shopping Center is also growing rapidly and enables us to market the exciting homes of our new buyers. We will be opening a branch office at the Manchester Shopping Center, near the University of Connecticut, during February, and have tentative plans for several other branch office openings during 1969.

Wanted—To Buy 58

LOOKING for used furniture, call 649-5334.

WANTED—Restaurant equipment, used. Call 649-5334.

RELIABLE person needed part-time to care for live animal department at Lata Junior Museum. No previous experience necessary but must like animals. Hours 9 a.m. to 12 p.m. and 2 p.m. to 5 p.m. Tuesday through Saturday in Vernon Circle Shopping Center, which is adjacent to Exit 10 of the Wilbur Cross Parkway (Interstate 84) and at the hub of the highway network for one of New England's fastest growing areas. We are the exclusive sales agents for 7 successful new planning several more to open in the near future. The Vernon Circle Shopping Center is also growing rapidly and enables us to market the exciting homes of our new buyers. We will be opening a branch office at the Manchester Shopping Center, near the University of Connecticut, during February, and have tentative plans for several other branch office openings during 1969.

Wanted—To Buy 58

LOOKING for used furniture, call 649-5334.

WANTED—Restaurant equipment, used. Call 649-5334.

RELIABLE person needed part-time to care for live animal department at Lata Junior Museum. No previous experience necessary but must like animals. Hours 9 a.m. to 12 p.m. and 2 p.m. to 5 p.m. Tuesday through Saturday in Vernon Circle Shopping Center, which is adjacent to Exit 10 of the Wilbur Cross Parkway (Interstate 84) and at the hub of the highway network for one of New England's fastest growing areas. We are the exclusive sales agents for 7 successful new planning several more to open in the near future. The Vernon Circle Shopping Center is also growing rapidly and enables us to market the exciting homes of our new buyers. We will be opening a branch office at the Manchester Shopping Center, near the University of Connecticut, during February, and have tentative plans for several other branch office openings during 1969.

Wanted—To Buy 58

LOOKING for used furniture, call 649-5334.

WANTED—Restaurant equipment, used. Call 649-5334.

RELIABLE person needed part-time to care for live animal department at Lata Junior Museum. No previous experience necessary but must like animals. Hours 9 a.m. to 12 p.m. and 2 p.m. to 5 p.m. Tuesday through Saturday in Vernon Circle Shopping Center, which is adjacent to Exit 10 of the Wilbur Cross Parkway (Interstate 84) and at the hub of the highway network for one of New England's fastest growing areas. We are the exclusive sales agents for 7 successful new planning several more to open in the near future. The Vernon Circle Shopping Center is also growing rapidly and enables us to market the exciting homes of our new buyers. We will be opening a branch office at the Manchester Shopping Center, near the University of Connecticut, during February, and have tentative plans for several other branch office openings during 1969.

Wanted—To Buy 58

## Apartment—Flat—Tenements 63

149 OAKLAND St. 5 room tenement, \$100. 649-2326, 9-5.

MANCHESTER—Large five room flat, first floor, two bedrooms, full bath, kitchen, living room, dining room, one child occupied. 872-2002.

LOOKING for anything in real estate rentals—apartments, houses, multiple dwellings, no fees. Call J. D. Real Estate Associates, Inc., 643-5129.

STRATFORD ST.—Four rooms, first floor, heat, hot water, garage, \$130. per month. 643-5565 evening.

WEST SIDE on bus line, six room duplex, newly decorated. Adults, no pets. Call after 5 p.m., 649-5643.

FOUR ROOM apartment, second floor, stove and refrigerator, no children. Call 643-7270.

22 LOCUST STREET, six room duplex, first floor, two bedrooms. Lease and utility included. 649-2428, 9 to 5 p.m.

MANCHESTER—New Garden two bedroom deluxe apartment, full kitchen, refrigerator and appliances furnished. \$175 per month. Call Paul W. Dougan, Realtor, 649-6038.

FOUR ROOM, second floor apartment in two family house. Heat, hot water, appliances. Call 649-5334.

SEASONED fireplace wood, delivered. Call 649-1898 or 228-9538.

Wanted—To Buy 58

LOOKING for used furniture, call 649-5334.

WANTED—Restaurant equipment, used. Call 649-5334.

RELIABLE person needed part-time to care for live animal department at Lata Junior Museum. No previous experience necessary but must like animals. Hours 9 a.m. to 12 p.m. and 2 p.m. to 5 p.m. Tuesday through Saturday in Vernon Circle Shopping Center, which is adjacent to Exit 10 of the Wilbur Cross Parkway (Interstate 84) and at the hub of the highway network for one of New England's fastest growing areas. We are the exclusive sales agents for 7 successful new planning several more to open in the near future. The Vernon Circle Shopping Center is also growing rapidly and enables us to market the exciting homes of our new buyers. We will be opening a branch office at the Manchester Shopping Center, near the University of Connecticut, during February, and have tentative plans for several other branch office openings during 1969.

Wanted—To Buy 58

LOOKING for used furniture, call 649-5334.

WANTED—Restaurant equipment, used. Call 649-5334.

RELIABLE person needed part-time to care for live animal department at Lata Junior Museum. No previous experience necessary but must like animals. Hours 9 a.m. to 12 p.m. and 2 p.m. to 5 p.m. Tuesday through Saturday in Vernon Circle Shopping Center, which is adjacent to Exit 10 of the Wilbur Cross Parkway (Interstate 84) and at the hub of the highway network for one of New England's fastest growing areas. We are the exclusive sales agents for 7 successful new planning several more to open in the near future. The Vernon Circle Shopping Center is also growing rapidly and enables us to market the exciting homes of our new buyers. We will be opening a branch office at the Manchester Shopping Center, near the University of Connecticut, during February, and have tentative plans for several other branch office openings during 1969.

Wanted—To Buy 58

LOOKING for used furniture, call 649-5334.

WANTED—Restaurant equipment, used. Call 649-5334.

RELIABLE person needed part-time to care for live animal department at Lata Junior Museum. No previous experience necessary but must like animals. Hours 9 a.m. to 12 p.m. and 2 p.m. to 5 p.m. Tuesday through Saturday in Vernon Circle Shopping Center, which is adjacent to Exit 10 of the Wilbur Cross Parkway (Interstate 84) and at the hub of the highway network for one of New England's fastest growing areas. We are the exclusive sales agents for 7 successful new planning several more to open in the near future. The Vernon Circle Shopping Center is also growing rapidly and enables us to market the exciting homes of our new buyers. We will be opening a branch office at the Manchester Shopping Center, near the University of Connecticut, during February, and have tentative plans for several other branch office openings during 1969.

Wanted—To Buy 58

LOOKING for used furniture, call 649-5334.

WANTED—Restaurant equipment, used. Call 649-5334.

RELIABLE person needed part-time to care for live animal department at Lata Junior Museum. No previous experience necessary but must like animals. Hours 9 a.m. to 12 p.m. and 2 p.m. to 5 p.m. Tuesday through Saturday in Vernon Circle Shopping Center, which is adjacent to Exit 10 of the Wilbur Cross Parkway (Interstate 84) and at the hub of the highway network for one of New England's fastest growing areas. We are the exclusive sales agents for 7 successful new planning several more to open in the near future. The Vernon Circle Shopping Center is also growing rapidly and enables us to market the exciting homes of our new buyers. We will be opening a branch office at the Manchester Shopping Center, near the University of Connecticut, during February, and have tentative plans for several other branch office openings during 1969.

Wanted—To Buy 58

LOOKING for used furniture, call 649-5334.

WANTED—Restaurant equipment, used. Call 649-5334.

RELIABLE person needed part-time to care for live animal department at Lata Junior Museum. No previous experience necessary but must like animals. Hours 9 a.m. to 12 p.m. and 2 p.m. to 5 p.m. Tuesday through Saturday in Vernon Circle Shopping Center, which is adjacent to Exit 10 of the Wilbur Cross Parkway (Interstate 84) and at the hub of the highway network for one of New England's fastest growing areas. We are the exclusive sales agents for 7 successful new planning several more to open in the near future. The Vernon Circle Shopping Center is also growing rapidly and enables us to market the exciting homes of our new buyers. We will be opening a branch office at the Manchester Shopping Center, near the University of Connecticut, during February, and have tentative plans for several other branch office openings during 1969.

Wanted—To Buy 58

LOOKING for used furniture, call 649-5334.

## Business Locations For Rent 64

MANCHESTER—Three new stores for lease. 600x100 square feet. Busy location. Reasonable. Hayes Agency, 649-5334.

PRIME office for lease. Escrow. Ideal location. Medical or Pharmacy Building, Hayes and Main Street. Paved, air-conditioned. Call evening, 649-5334.

HARTFORD RD.—2,800 square feet. Ideal for manufacturing or distribution. Fully equipped, excellent location. 649-2326.

723 N. St., corner office, 3 rooms and lavatory. House & Halls Bldg. Call 649-4846 after 5 p.m., 649-5643.

474 MAIN ST. office for rent. Center of town, plenty of parking. 649-2326, 9-5.

MANCHESTER—Six room house, available immediately. Voluntary Agency, 649-2326.

FOUR ROOM house for rent. Full kitchen, refrigerator, heat, hot water. Call 642-7667.

PITKIN ST.—Charming 6 room completely renovated Cape. One child acceptable. Reference. Call 649-5334.

FOUR ROOM, second floor apartment in two family house. Heat, hot water, appliances. Call 649-5334.

SEASONED fireplace wood, delivered. Call 649-1898 or 228-9538.

Wanted—To Buy 58

LOOKING for used furniture, call 649-5334.

WANTED—Restaurant equipment, used. Call 649-5334.

RELIABLE person needed part-time to care for live animal department at Lata Junior Museum. No previous experience necessary but must like animals. Hours 9 a.m. to 12 p.m. and 2 p.m. to 5 p.m. Tuesday through Saturday in Vernon Circle Shopping Center, which is adjacent to Exit 10 of the Wilbur Cross Parkway (Interstate 84) and at the hub of the highway network for one of New England's fastest growing areas. We are the exclusive sales agents for 7 successful new planning several more to open in the near future. The Vernon Circle Shopping Center is also growing rapidly and enables us to market the exciting homes of our new buyers. We will be opening a branch office at the Manchester Shopping Center, near the University of Connecticut, during February, and have tentative plans for several other branch office openings during 1969.

Wanted—To Buy 58

LOOKING for used furniture, call 649-5334.

WANTED—Restaurant equipment, used. Call 649-5334.

RELIABLE person needed part-time to care for live animal department at Lata Junior Museum. No previous experience necessary but must like animals. Hours 9 a.m. to 12 p.m. and 2 p.m. to 5 p.m. Tuesday through Saturday in Vernon Circle Shopping Center, which is adjacent to Exit 10 of the Wilbur Cross Parkway (Interstate 84) and at the hub of the highway network for one of New England's fastest growing areas. We are the exclusive sales agents for 7 successful new planning several more to open in the near future. The Vernon Circle Shopping Center is also growing rapidly and enables us to market the exciting homes of our new buyers. We will be opening a branch office at the Manchester Shopping Center, near the University of Connecticut, during February, and have tentative plans for several other branch office openings during 1969.

Wanted—To Buy 58

LOOKING for used furniture, call 649-5334.

WANTED—Restaurant equipment, used. Call 649-5334.

RELIABLE person needed part-time to care for live animal department at Lata Junior Museum. No previous experience necessary but must like animals. Hours 9 a.m. to 12 p.m. and 2 p.m. to 5 p.m. Tuesday through Saturday in Vernon Circle Shopping Center, which is adjacent to Exit 10 of the Wilbur Cross Parkway (Interstate 84) and at the hub of the highway network for one of New England's fastest growing areas. We are the exclusive sales agents for 7 successful new planning several more to open in the near future. The Vernon Circle Shopping Center is also growing rapidly and enables us to market the exciting homes of our new buyers. We will be opening a branch office at the Manchester Shopping Center, near the University of Connecticut, during February, and have tentative plans for several other branch office openings during 1969.

Wanted—To Buy 58

LOOKING for used furniture, call 649-5334.

WANTED—Restaurant equipment, used. Call 649-5334.

RELIABLE person needed part-time to care for live animal department at Lata Junior Museum. No previous experience necessary but must like animals. Hours 9 a.m. to 12 p.m. and 2 p.m. to 5 p.m. Tuesday through Saturday in Vernon Circle Shopping Center, which is adjacent to Exit 10 of the Wilbur Cross Parkway (Interstate 84) and at the hub of the highway network for one of New England's fastest growing areas. We are the exclusive sales agents for 7 successful new planning several more to open in the near future. The Vernon Circle Shopping Center is also growing rapidly and enables us to market the exciting homes of our new buyers. We will be opening a branch office at the Manchester Shopping Center, near the University of Connecticut, during February, and have tentative plans for several other branch office openings during 1969.

Wanted—To Buy 58

LOOKING for used furniture, call 649-5334.

WANTED—Restaurant equipment, used. Call 649-5334.

RELIABLE person needed part-time to care for live animal department at Lata Junior Museum. No previous experience necessary but must like animals. Hours 9 a.m. to 12 p.m. and 2 p.m. to 5 p.m. Tuesday through Saturday in Vernon Circle Shopping Center, which is adjacent to Exit 10 of the Wilbur Cross Parkway (Interstate 84) and at the hub of the highway network for one of New England's fastest growing areas. We are the exclusive sales agents for 7 successful new planning several more to open in the near future. The Vernon Circle Shopping Center is also growing rapidly and enables us to market the exciting homes of our new buyers. We will be opening a branch office at the Manchester Shopping Center, near the University of Connecticut, during February, and have tentative plans for several other branch office openings during 1969.

Wanted—To Buy 58

LOOKING for used furniture, call 649-5334.

## Land For Sale 71

ACRESAGE in Manchester and South Windsor. Excellent. Incentive. Call 649-5334.

COVENTRY—Approximately 20 acres, including, wooded tract, 200 ft. wide. H.M. Frechette Realtor, 649-9983.

HARTFORD RD.—2,800



About Town

North United Methodist Church will meet tomorrow at 7 p.m. at the church.

State Commission Calls Vernon Circle Tank Safe

It is the opinion of the Public Utilities Commission that the Connected Light and Power gas tank at Vernon Circle is safe.

Assembly Helps Students Plan For Grade 10

The importance of a Good Scholastic Record is the theme of an assembly program to be given for Illing Junior High School ninth grade students tomorrow morning at 9:15 in Bailey Auditorium.

Charge Your Prescription Here

At Pinehurst buy 1 jar of Kraft's Lo-Cal Italian Dressing and get 1 jar of Kraft's Lo-Cal 1,000 Island Dressing free in other words 2 jars for 37¢.

Philippines Hit By Earthquake

MANILA (AP)—An earthquake of intensity equal to the one which killed over 400 persons in Manila last year, struck the southern Philippine city of Davao, the Weather Bureau announced today.

B52s Said Attacking Supply Lines in Laos

SAIGON (AP)—From 15 to 20 American B52 bombers have been attacking Communist supply routes through Laos each day, and some of them have been hitting north of the 17th parallel, U.S. military sources said today.

Allen Dulles Dies; Former CIA Head

WASHINGTON (AP)—Allen W. Dulles, America's master spy who steered the Central Intelligence Agency through nine years of controversial international intrigues, died late Wednesday. He was 78.

Iraq Hangings Incense Man in Street

By HAL MCCLURE Associated Press Writer THE AVY (AP)—What an Israel do, if anything, strike back at Iraq for hanging Jews as spies or for staging new show trials.

HOUSE OF HALE advertisement featuring a woman in a dress and text: 'sensational 1/2 OFF dress sale'.

Giant Clearance Sale advertisement with a large 'CLEARANCE' graphic and a grid of clothing items with prices.

Final Coat Clearance advertisement with text: 'This Is It! FINAL COAT Clearance!'.

Most Manchester Stores Open Tonight Until 9 O'Clock

Manchester Evening Herald

Average Daily Net Press Run For The Week Ended January 25, 1968 15,436

VOL. LXXXVIII, NO. 102 (EIGHTEEN PAGES) MANCHESTER, CONN., THURSDAY, JANUARY 30, 1968

(Classified Advertising on Page 15) PRICE TEN CENTS

The Weather

Rain tonight, temperatures rising to mid to upper 50s. Tomorrow rain ending, followed by partial clearing and cooler high in 20s.

He Refuses Comment on Navy Review

WASHINGTON (AP)—Secretary of Defense Melvin R. Laird announced today he has ordered a high level Pentagon study of the Pueblo case "to see that no incidents of this kind do not happen again."

Jet Strike on Iraqis Is Denied by Israel

By THE ASSOCIATED PRESS Iraq said today it was not the Israeli army that fired the jet fighters which struck Iraqis in Jordan today but Israel denied it.

Philippines Hit By Earthquake

MANILA (AP)—An earthquake of intensity equal to the one which killed over 400 persons in Manila last year, struck the southern Philippine city of Davao, the Weather Bureau announced today.

B52s Said Attacking Supply Lines in Laos

SAIGON (AP)—From 15 to 20 American B52 bombers have been attacking Communist supply routes through Laos each day, and some of them have been hitting north of the 17th parallel, U.S. military sources said today.

Allen Dulles Dies; Former CIA Head

WASHINGTON (AP)—Allen W. Dulles, America's master spy who steered the Central Intelligence Agency through nine years of controversial international intrigues, died late Wednesday. He was 78.

Iraq Hangings Incense Man in Street

By HAL MCCLURE Associated Press Writer THE AVY (AP)—What an Israel do, if anything, strike back at Iraq for hanging Jews as spies or for staging new show trials.

Laird Orders Pentagon To Study Pueblo Case



Icy Glaze Hits State

NEW HAVEN, Conn. (AP)—Freezing rain covered roads and sidewalks of Connecticut today, producing treacherous conditions throughout the state.

Skinner of Pueblo's 'Sister' Says He Wouldn't Arm Ship

Pueblo, said he had no forces under his direct command to provide emergency help when North Korea's navy surrounded her a year ago and that he plans and ships from other commands were unavailable or too far away.

No Progress Apparent, Paris Delegates Claim

PARIS (AP)—The four delegations to the full-scale Vietnam peace talks held a second session and all agreed there was no progress.

Iraq Is in Reprisal Mood

By HAL MCCLURE Associated Press Writer THE AVY (AP)—What an Israel do, if anything, strike back at Iraq for hanging Jews as spies or for staging new show trials.

Skipper of Pueblo's 'Sister' Says He Wouldn't Arm Ship

Pueblo, said he had no forces under his direct command to provide emergency help when North Korea's navy surrounded her a year ago and that he plans and ships from other commands were unavailable or too far away.